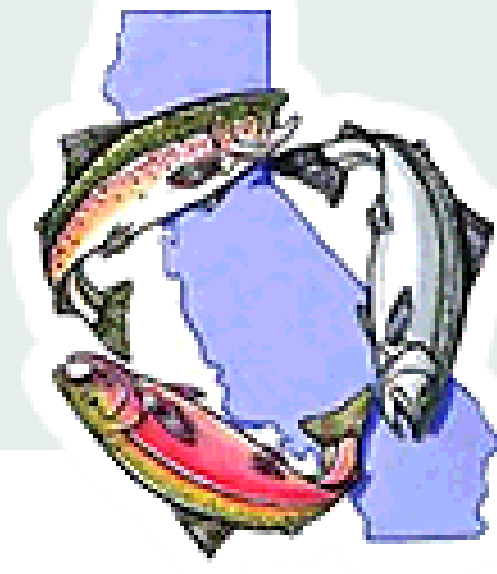


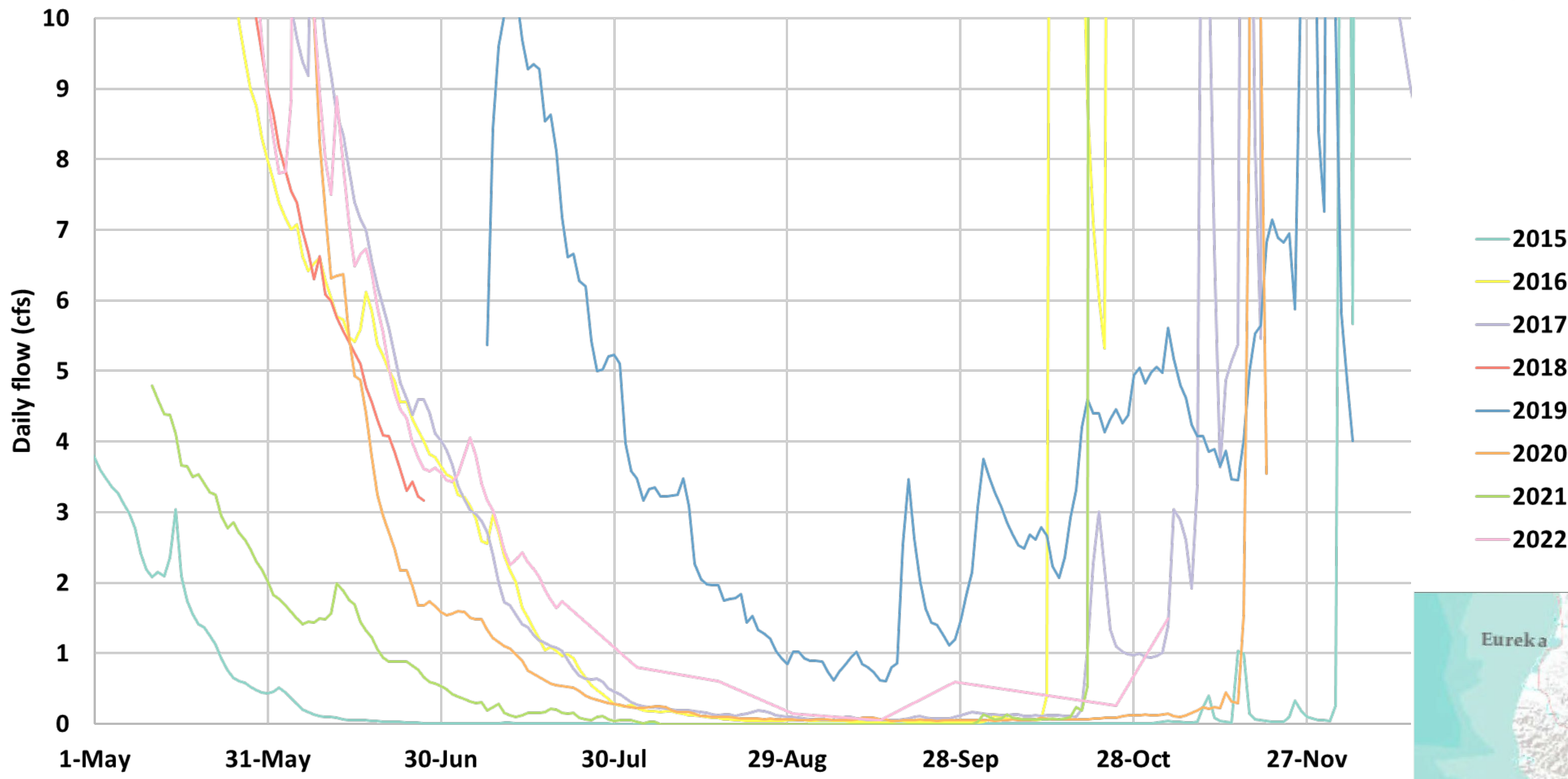
# Sproul Creek Streamflow Enhancement

Katrina Nystrom and Dana Stolzman, Salmonid Restoration Federation; and Joel Monschke, Stillwater Sciences

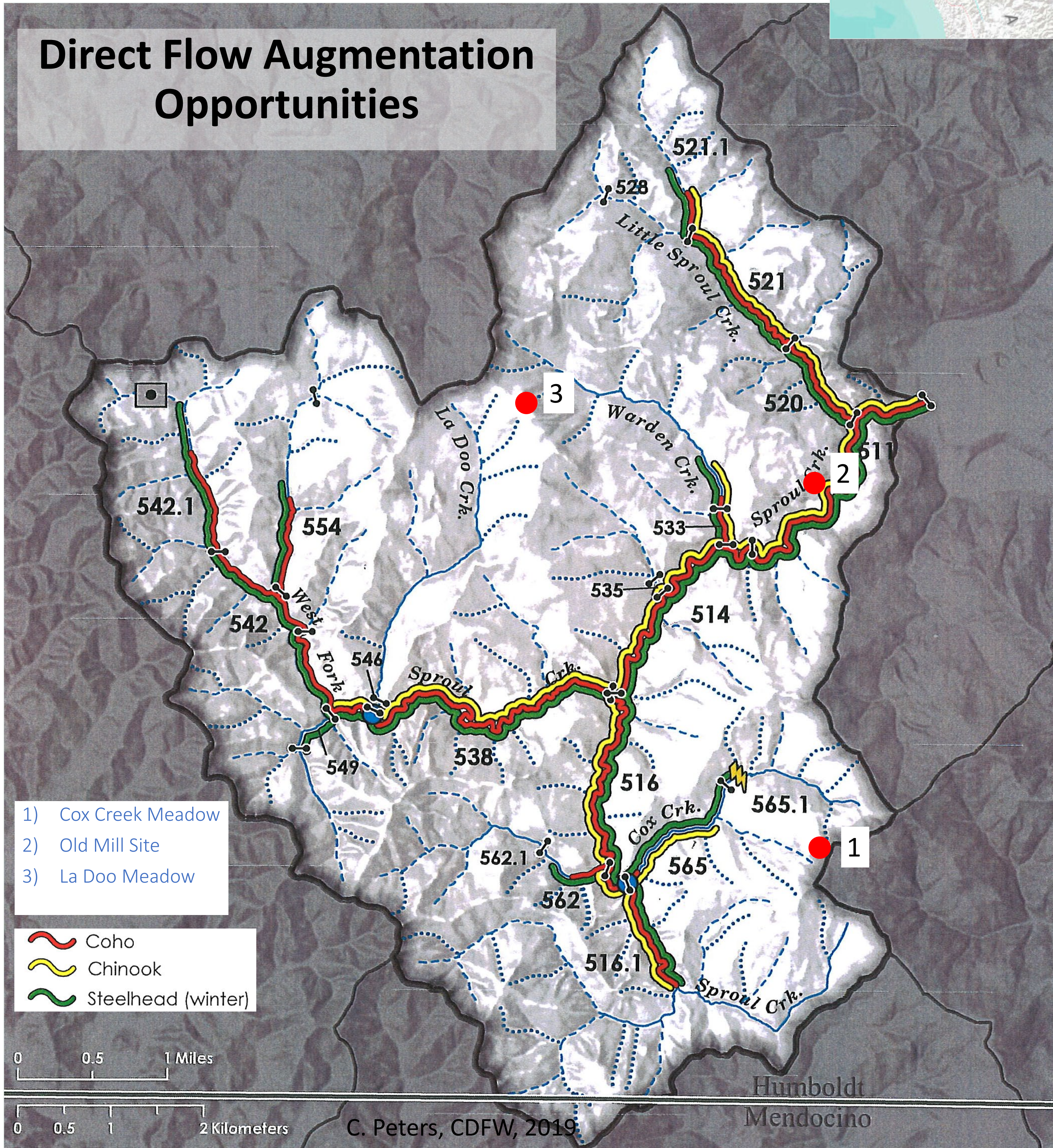
## Salmonid Restoration Federation



Lower Mainstem Sproul  
Daily Average Flow

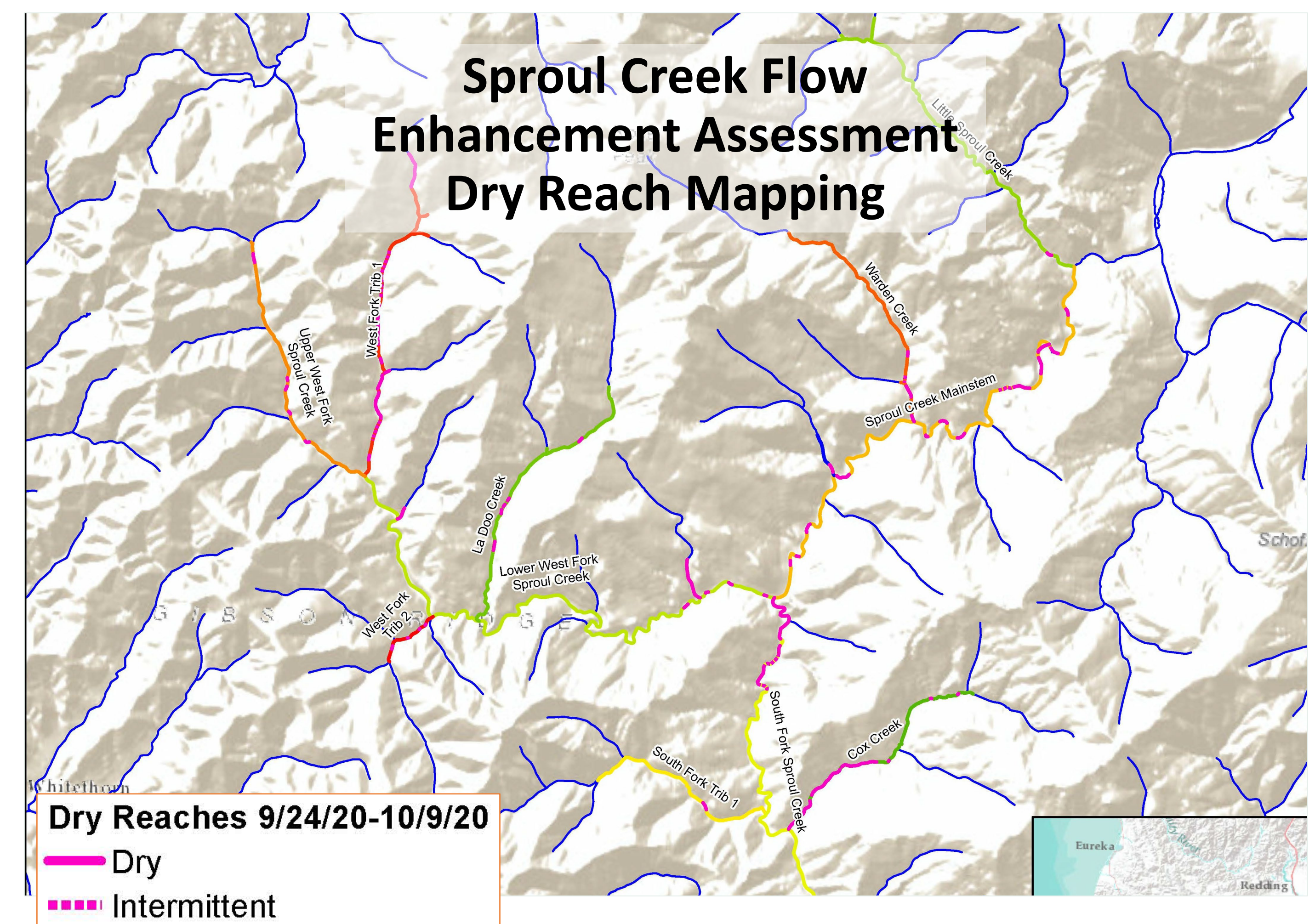


## Direct Flow Augmentation Opportunities



## Sproul Implementation Approach Summary

- 1) Direct Flow Augmentation
  - La Doo Meadow –Mitigated Negative Declaration in Progress
  - Additional opportunities, but likely to wait for results of ongoing direct flow augmentation projects before these proceed
- 2) Storage and Forbearance
  - Few opportunities because relatively low human use in Sproul Creek
- 3) Runoff Detention and Passive Release
  - Relatively steep watershed limits opportunities
  - Awaiting results from Mattole projects to inform future project development
- 4) Evapotranspiration Reduction (Forest Management)
  - Significant opportunities in Sproul due to timber management land use throughout watershed



Special Thanks

