

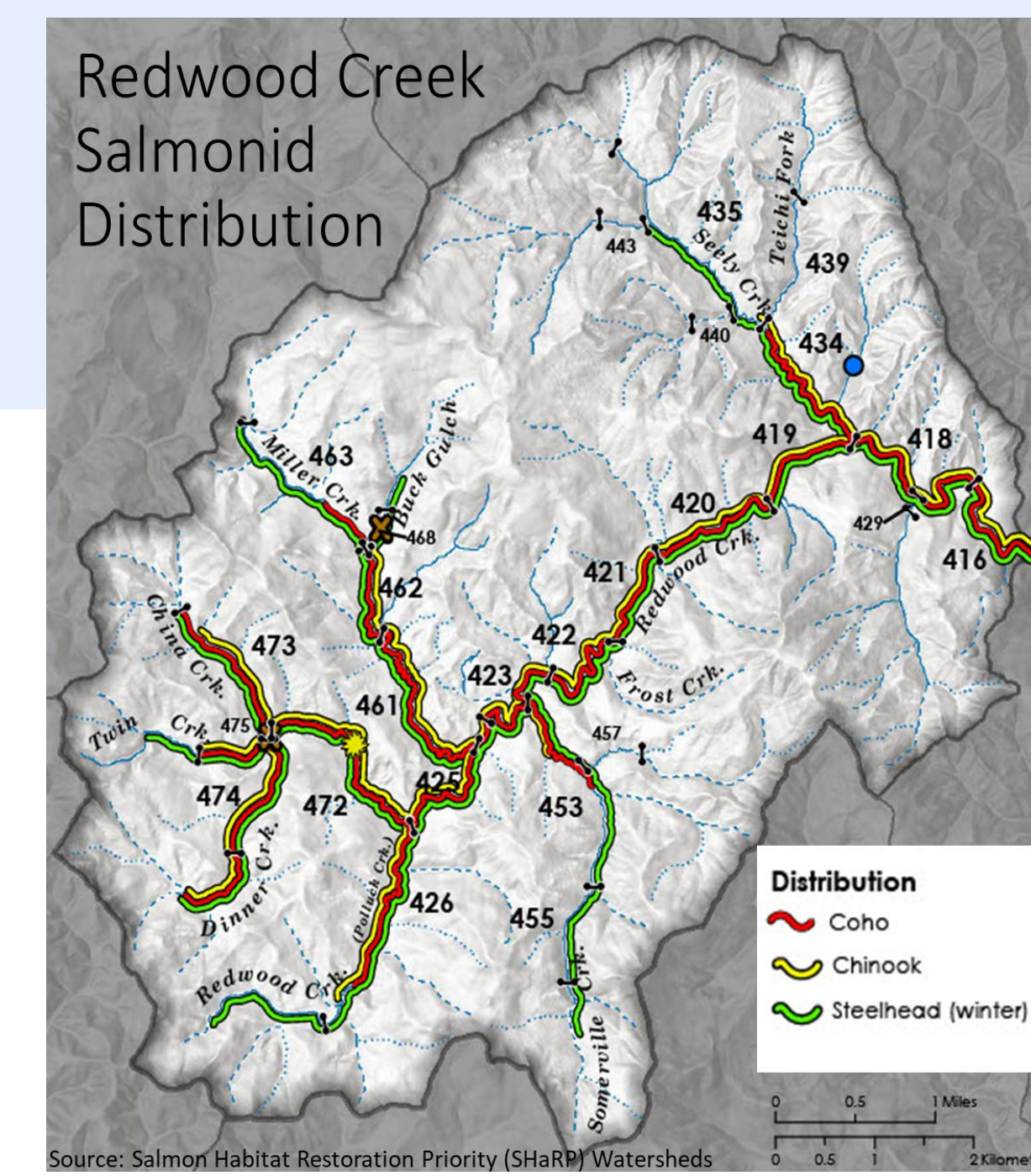
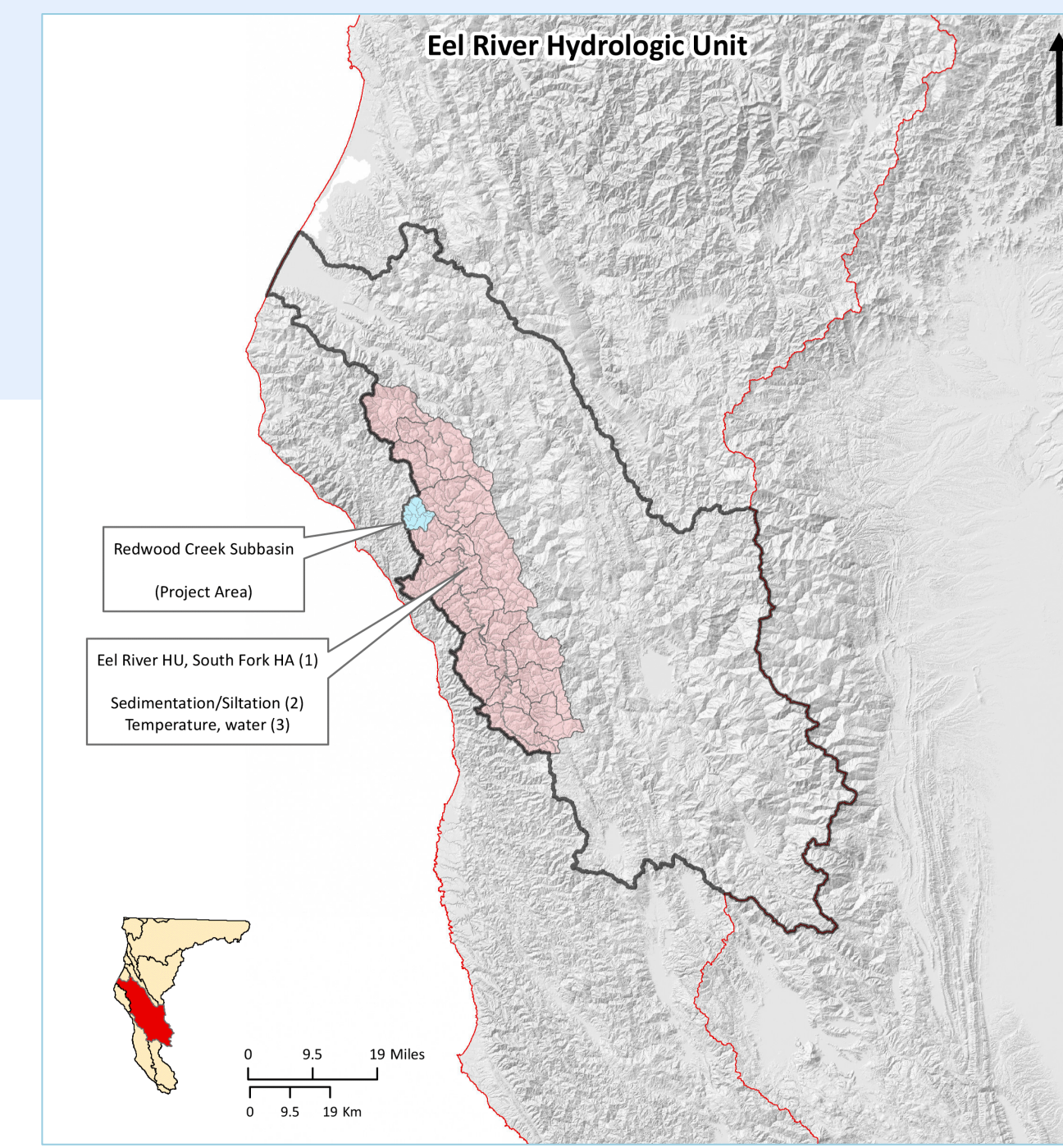
# Streamflow Enhancement in Redwood Creek

## South Fork Eel River

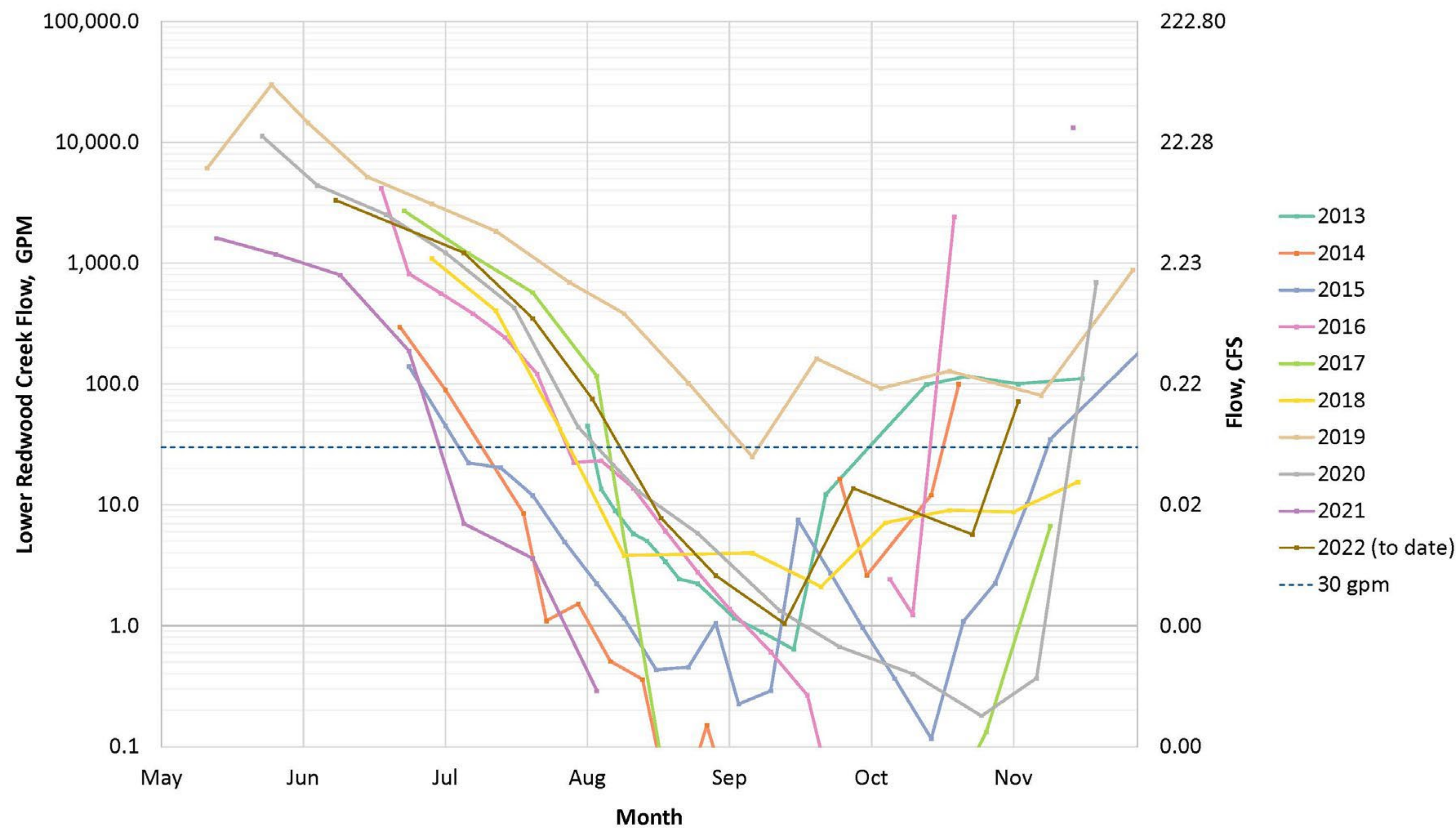
Katrina Nystrom and Dana Stolzman, Salmonid Restoration Federation; and Joel Monschke, Stillwater Sciences

### Background

- Redwood Creek, SF Eel is a high-priority watershed for Coho Salmon Recovery (SHaRP)
- Historic presence of Coho and Steelhead
- History of land stewardship in watershed
- Decentralized water diversions



RC-4 Low Flow Monitoring 2013-2022

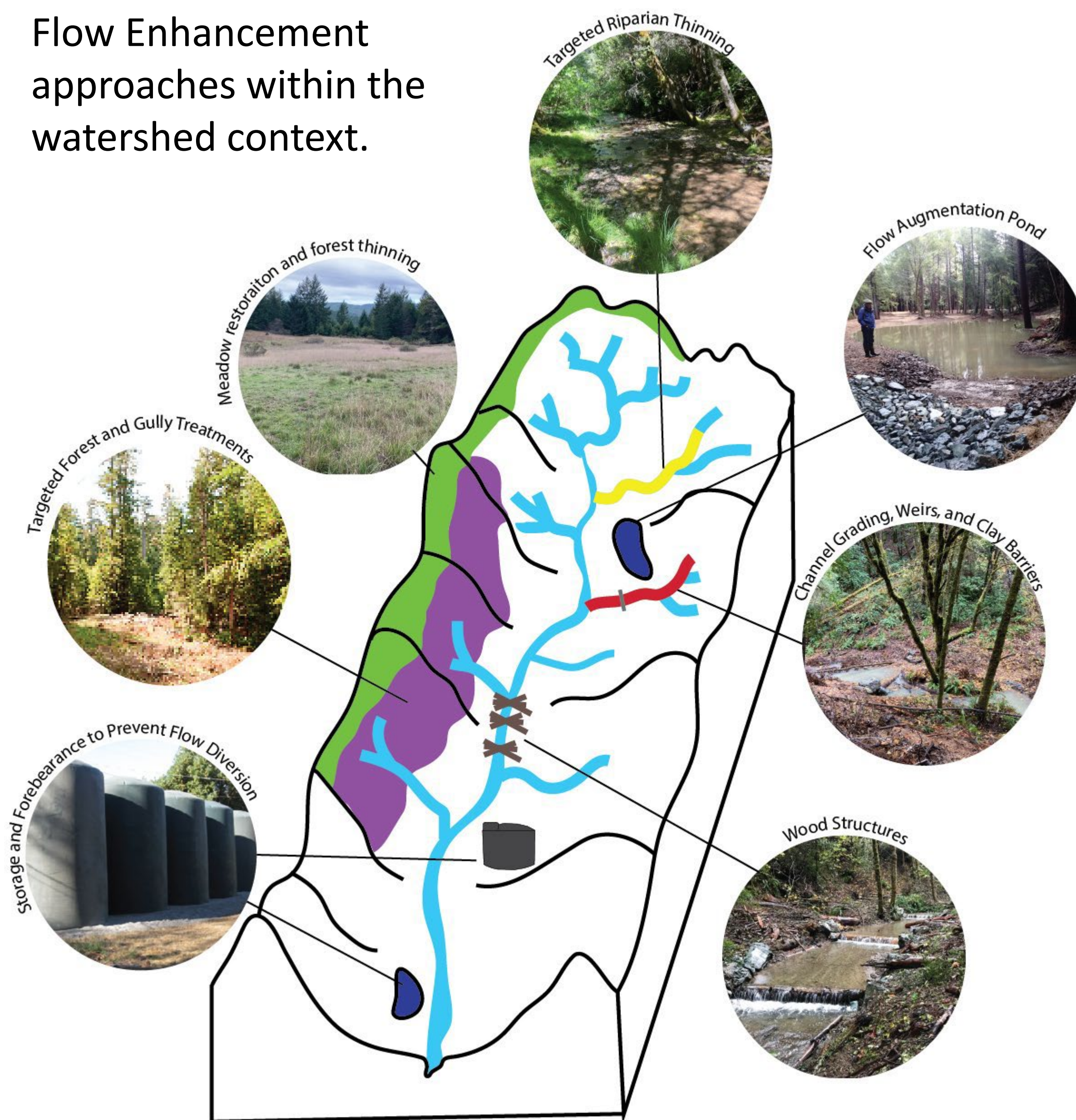


Streamflow has gone critically low or stopped in most years

### Completed

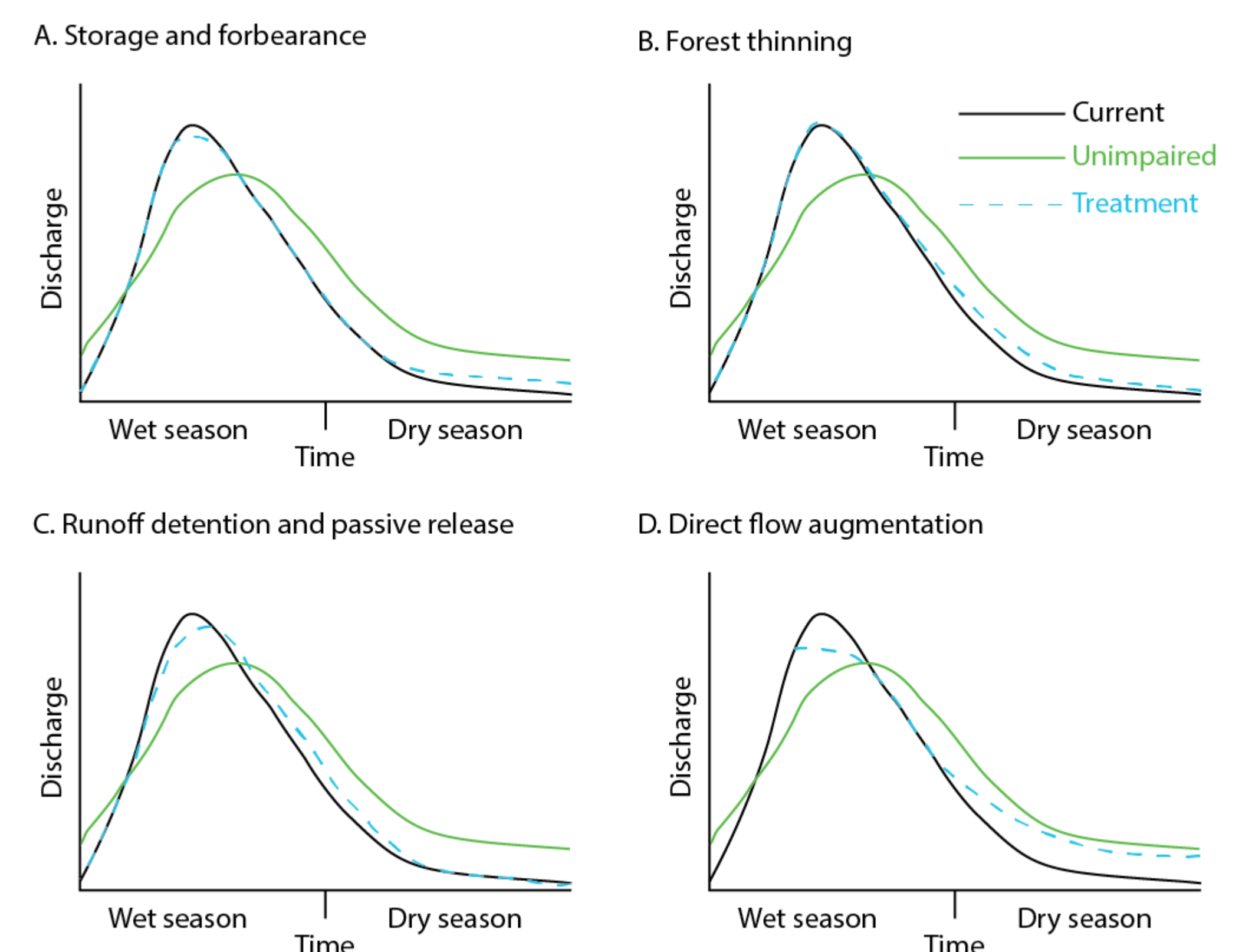
- SRF measured streamflow throughout the watershed 2013-2022
- Conducted Feasibility Study & Redwood Creek Flow Enhancement Plan
- Planning grants for designs

Flow Enhancement approaches within the watershed context.



### Next Steps

- Construction of off-channel ponds to supplement flows during dry season to start summer 2023
- WCB award for \$4.3 million for ten million gallons of water storage
- NCRP grant to develop Storage and Forbearance program downstream water users
- Study impacts of forest thinning on streamflow



Use your camera to scan for more information