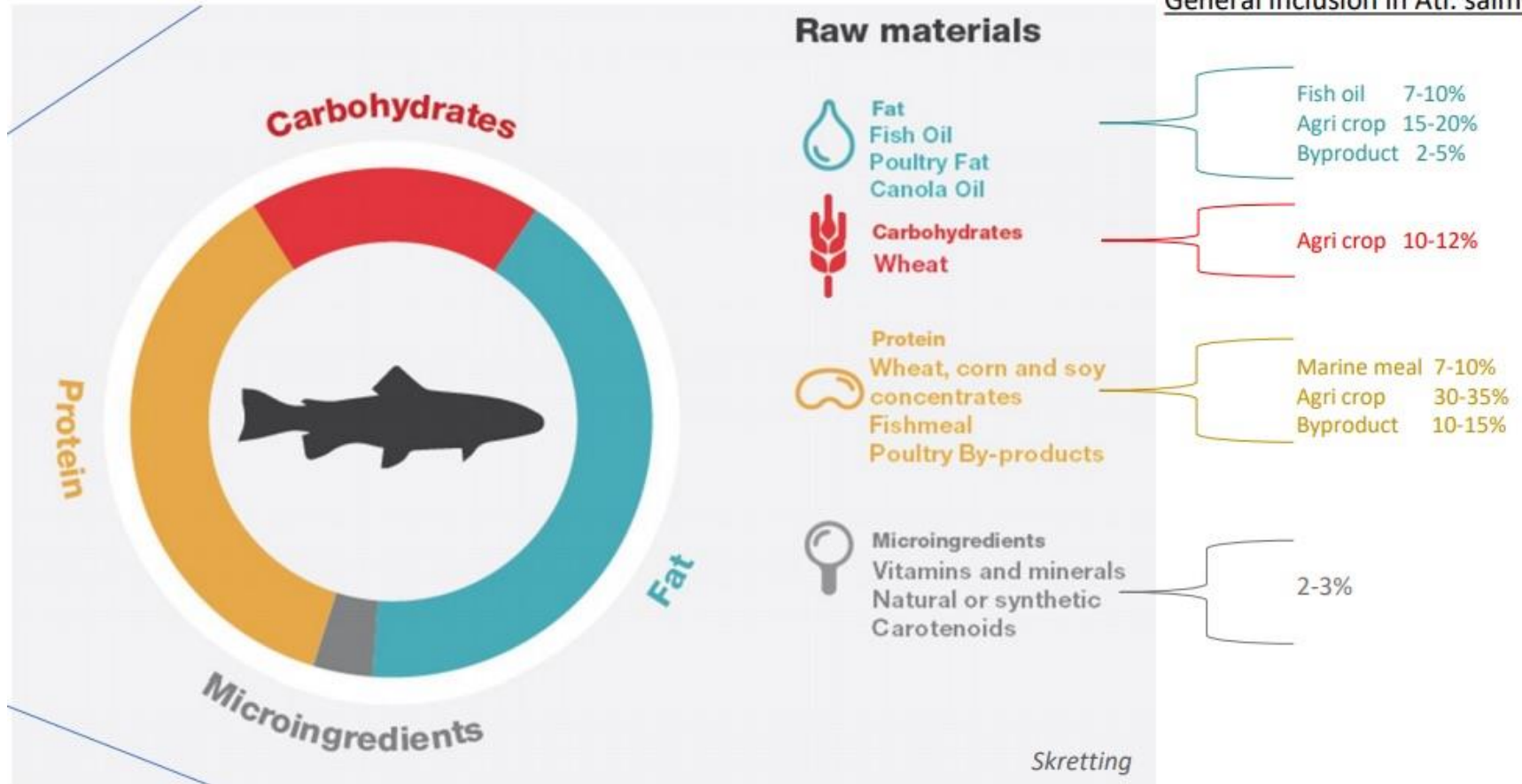


General inclusion in Atl. salmon feed



The two major issues with Nordic's Atlantic salmon feed sourcing are:

1. The 7-10% fish oil and 7-10% marine meal mean that 14-20% of the feed sourcing will be from wild fish that support marine ecosystems outside of the project area. In instances where this is Pacific herring, that means taking food resources away from wild salmon in the northwest.

2. The 2-5% poultry fat and 10-15% poultry byproducts means that 12-20% of Nordic's Atlantic salmon feed will be from an industry that is known to cause localized spread of antibiotic-resistant bacteria in poultry farming and fish farming. While this is not a direct threat to wild salmon, it is a human health hazard for commercial and indigenous fishermen, and for people recreating on the marine and estuarine sides of the Samoa Peninsula. They are our constituents, and they would want to know about this.