

Status of Recovery in a Spring Chinook Stronghold

Karuna Greenberg
Salmon River
Restoration Council



karuna@srrc.org

Salmon River – Important factors

- 2nd largest contributor of cold water to the Klamath
- Unregulated hydrograph
- No significant diversions nor barriers
- >98% federally owned and managed
- Host all runs of anadromous fish of the Klamath
- Largest and most viable run of wild spring Chinook in the Klamath
- Many impacts are in past – but others are present now
- Are we on the path to recovery?

Salmon River Spring Chinook—a Community Recovery Effort

- *Salmon River spring Chinook decline*
- *1980's, early 90's numbers dipped below 200*
- *Widespread poaching*
- *It was a way of life*

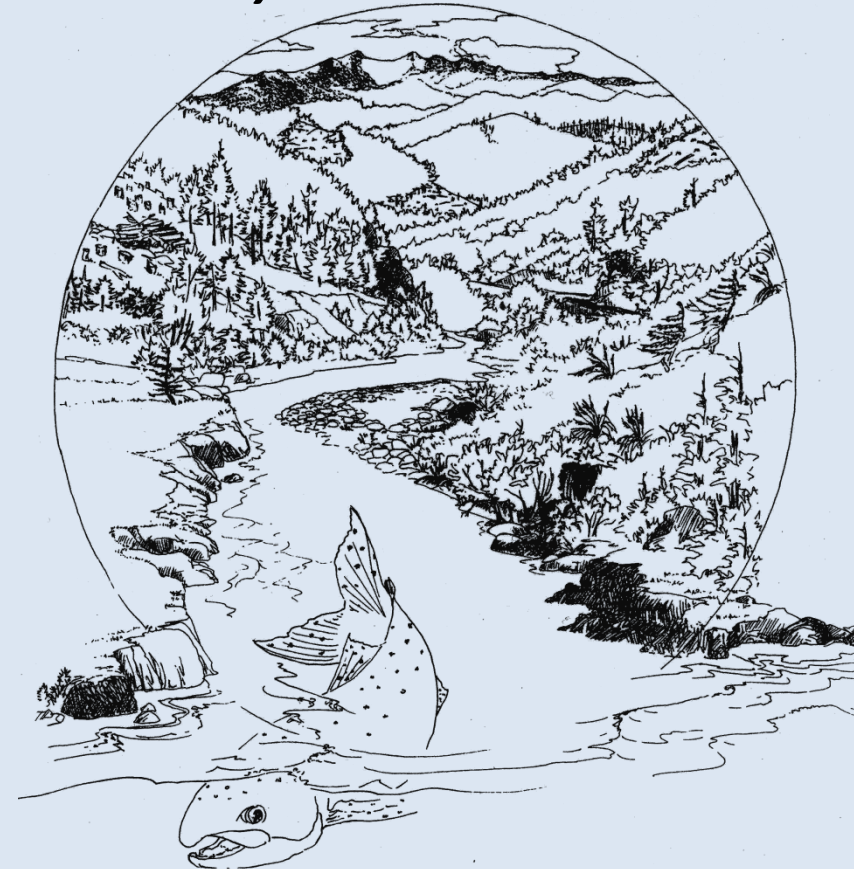


Holding Salmon at Crapo Creek



Salmon River spring Chinook - Salmon River Restoration Council Integrally connected

- *Late 1980's, early 90's declining runs*
- *Growing Concern from some in the community*
- *Klamath River Task Force Support*
- *Salmon Education*
- *SRRC born out of this effort*



Multi-Faceted Education

- *Series of workshops, education events, theatre & art*



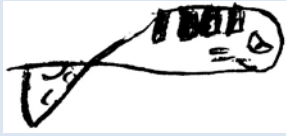
Poach eggs not fish campaign

Salmon Education



Salmon Ed : Guides and Anglers

Poach eggs not fish campaign



Watershed Education



Monitoring

Cooperative Spring Chinook / Summer Steelhead Dives

SRRC/Community Involvement in early '90's
Strong consistent effort



Photo: Peter Bohler

Monitoring



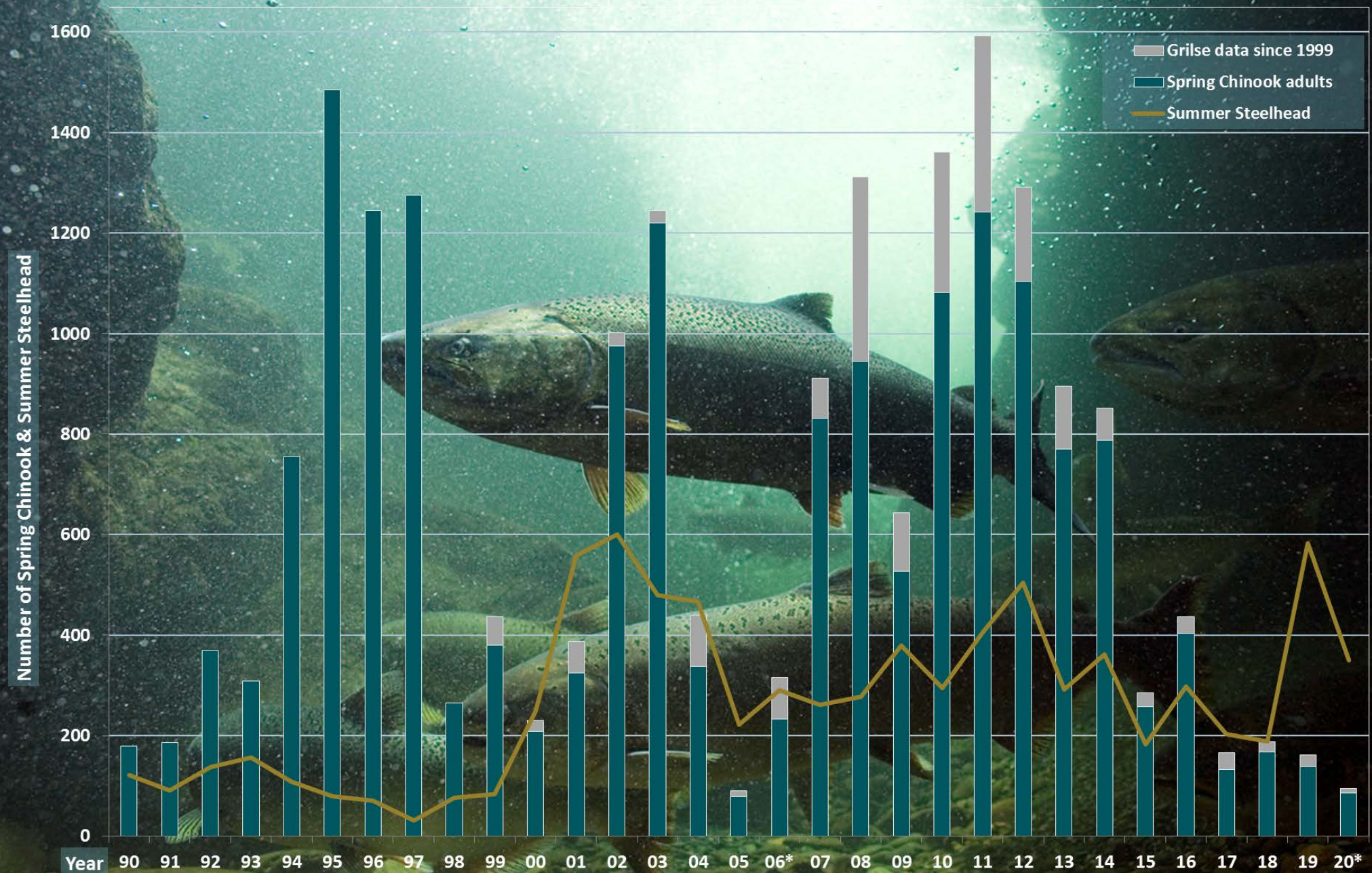
Spring Chinook Spawning and Redd Surveys

Salmon River Spring Run Chinook Census

Average ~660

High of ~1600

Low of 90



* 2006 Estimated due to wildfire: 2020 Preliminary data - excludes Wooley Creek

Photo: Salmon River Spring Chinook by Michael Bravo

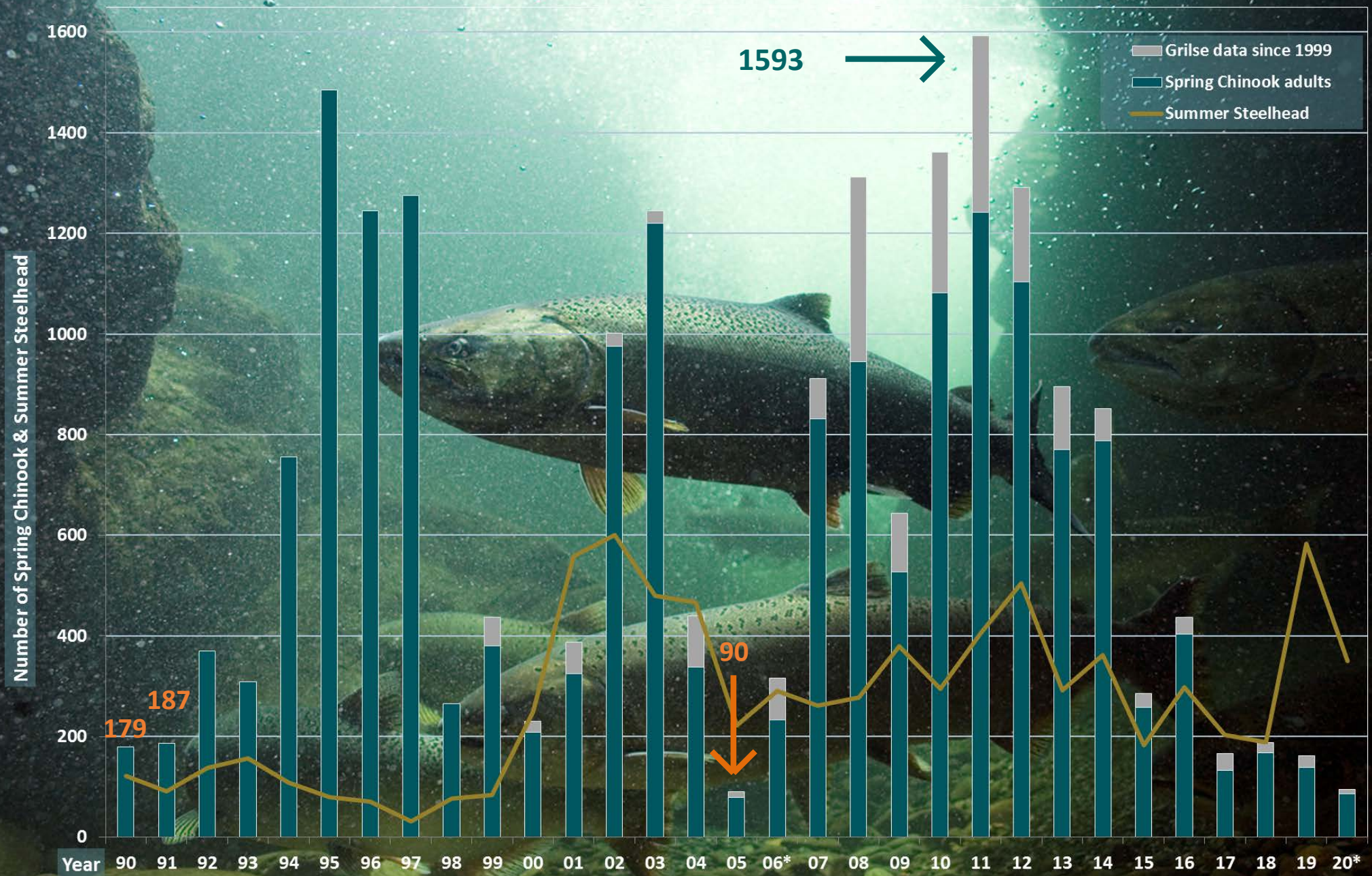
Salmon River Spring Run Chinook Census

Average ~660

High of ~1600

Low of 90

Capped
Peaks
Low Troughs



* 2006 Estimated due to wildfire

Photo: Salmon River Spring Chinook by Michael Bravo

Salmon River Spring Run Chinook Census

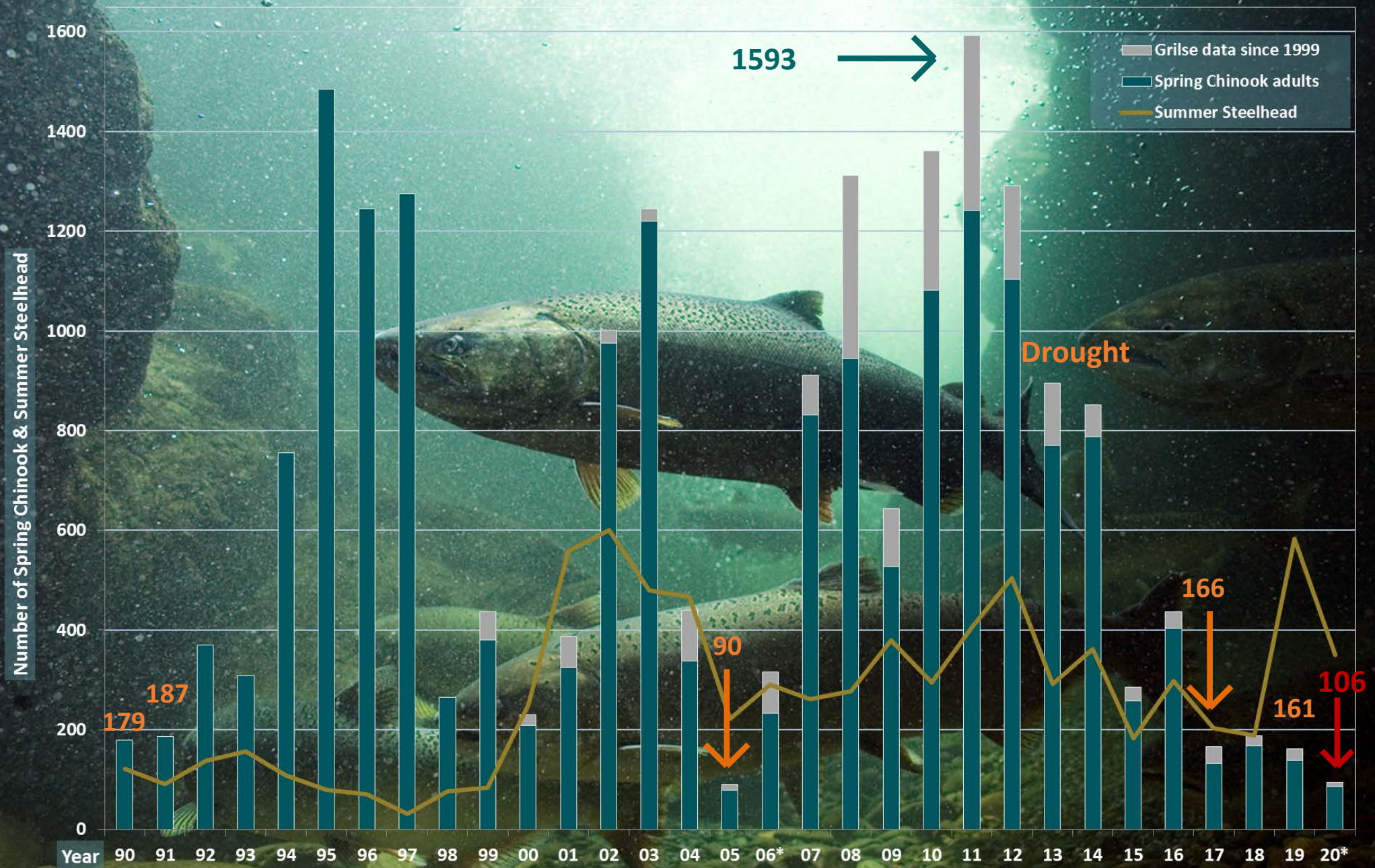
Average ~660

High of ~1600

Low of 90

Capped Peaks
Low Troughs

Longest running
trough since
1990



* 2006 Estimated due to wildfire:

Photo: Salmon River Spring Chinook by Michael Bravo

Salmon River Spring Run Chinook Census

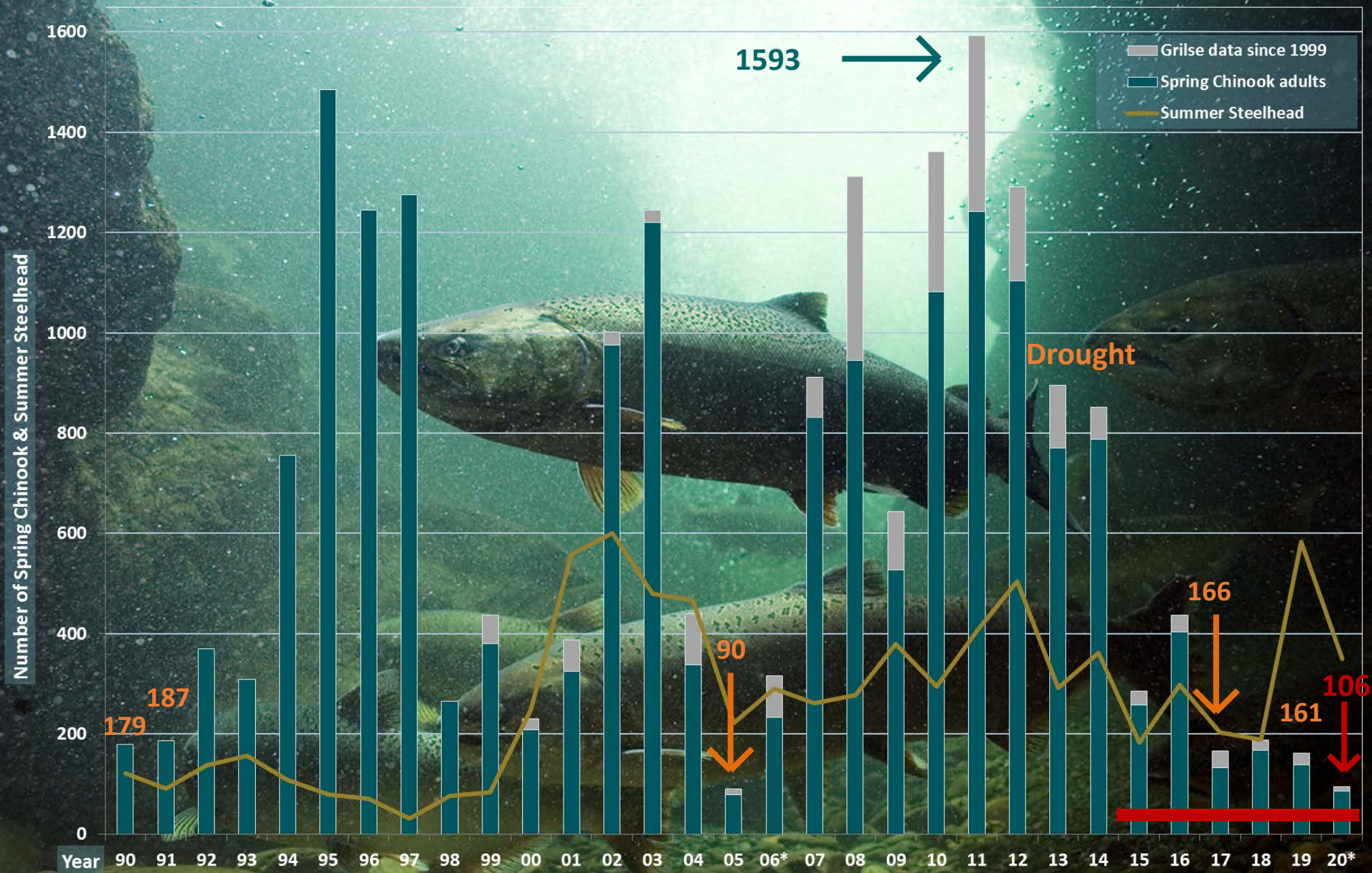
Average ~660

High of ~1600

Low of 90

Capped Peaks
Low Troughs

Longest running
trough since
1990



* 2006 Estimated due to wildfire

Photo: Salmon River Spring Chinook by Michael Bravo

Limiting factors

Klamath River water quality

Winter rearing habitat

Functional floodplains

High summer water Temps

Lack of protection

Funding and Interest

Suitable spawning gravel

Barriers and separation between spring and fall Chinook

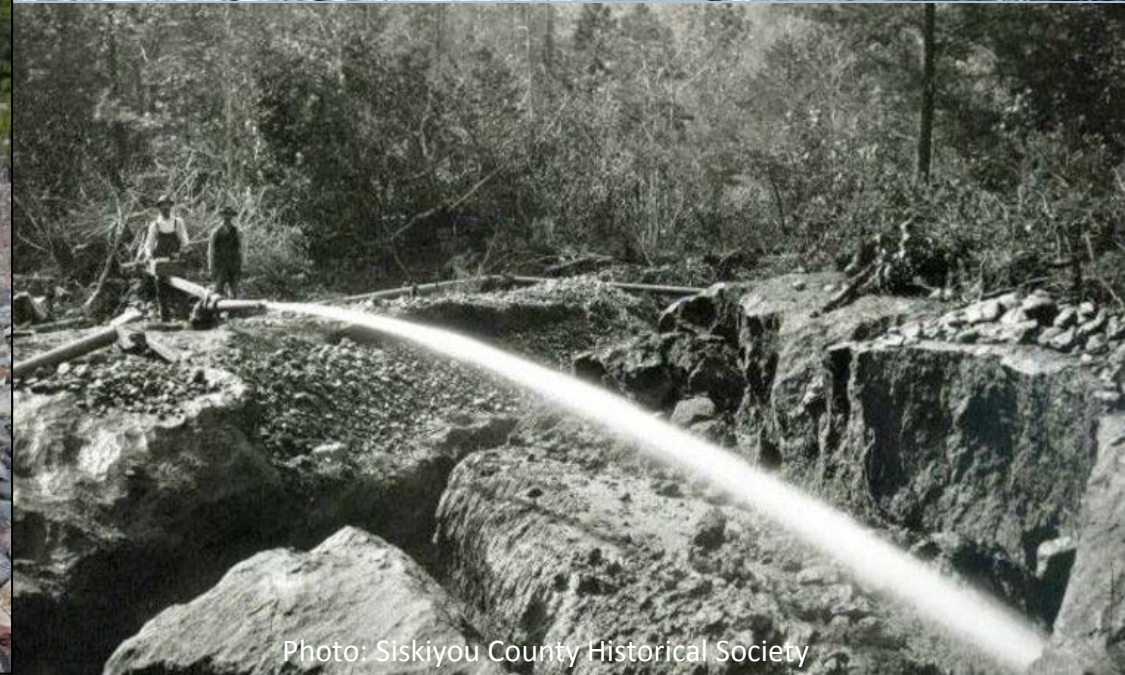
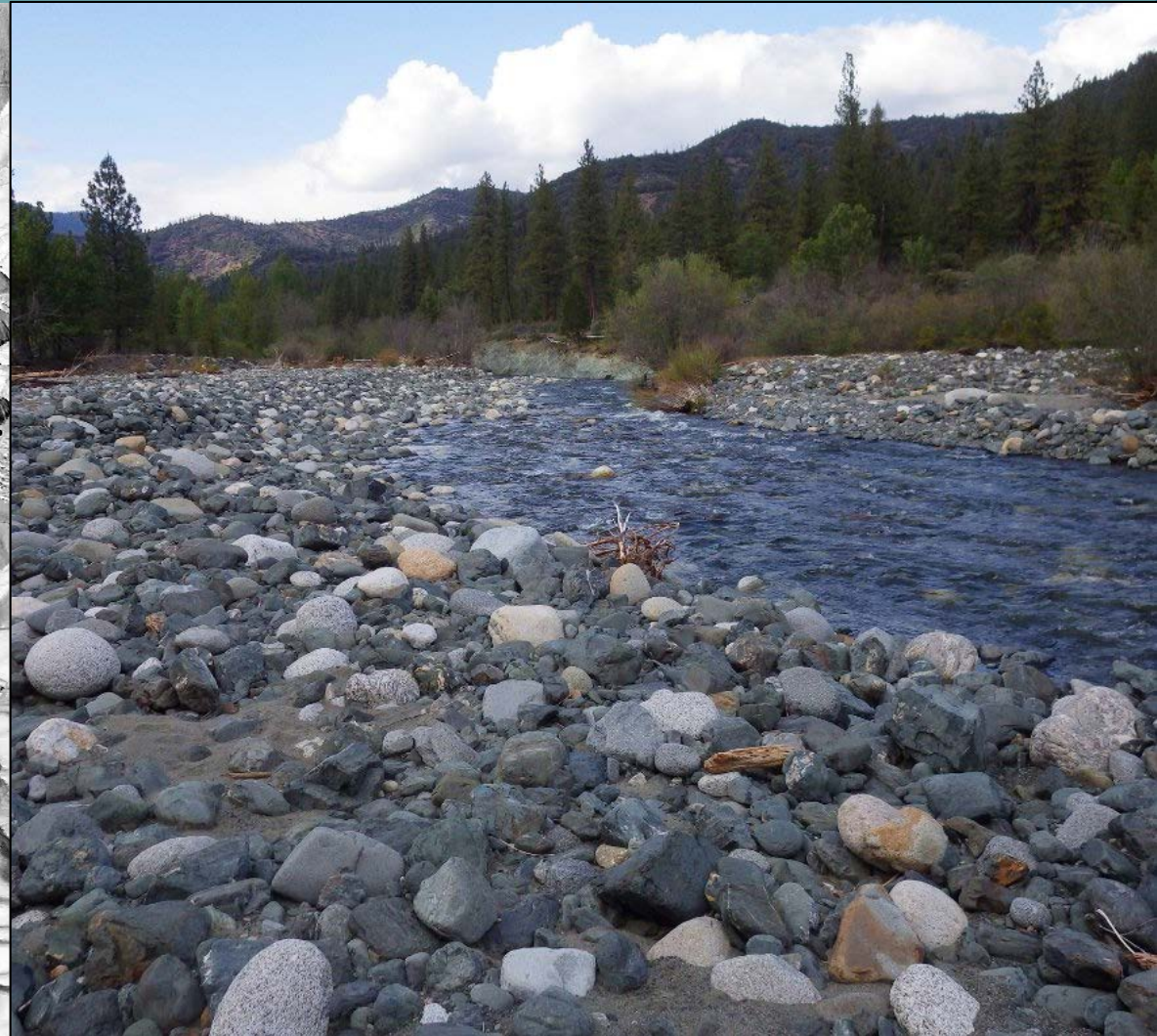
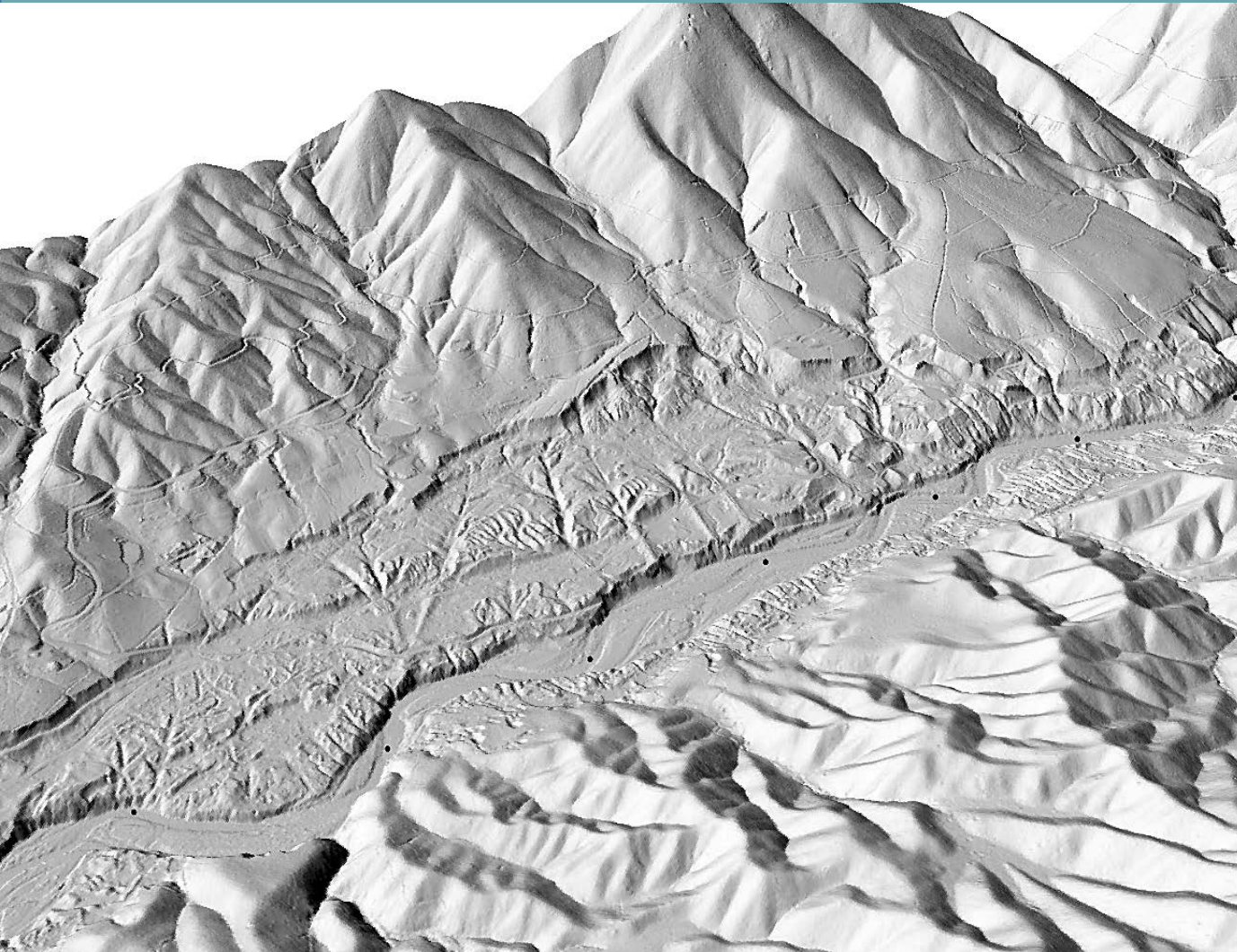


Photo: Siskiyou County Historical Society

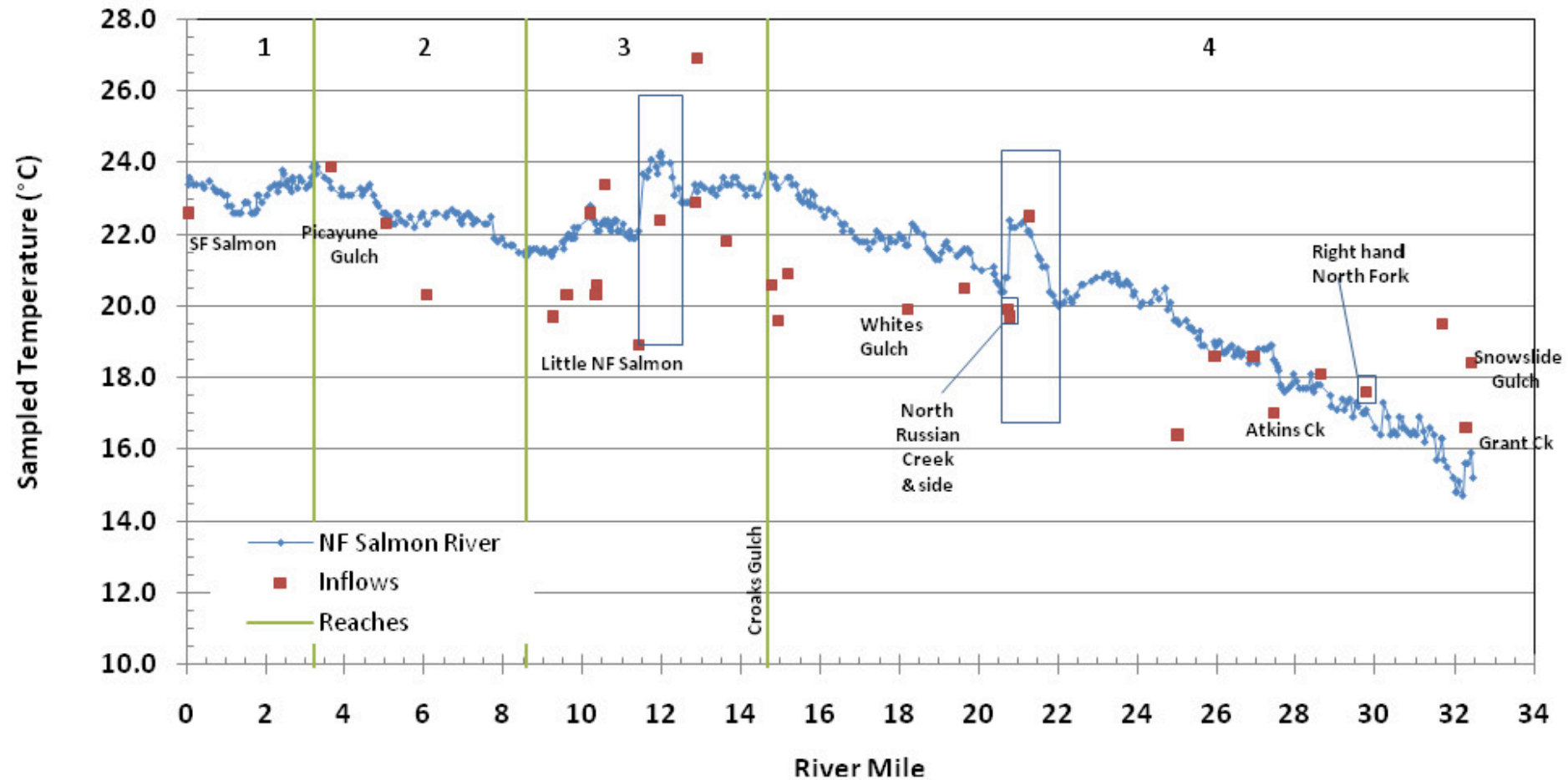
Limiting factors

Functional floodplains – Legacy mining impacts



Limiting factors

Temperature



Where do we go from here? How do we Protect & Restore these fish?



Photo: Janjaap Dekker

What SRRC and partners are working on/considering:

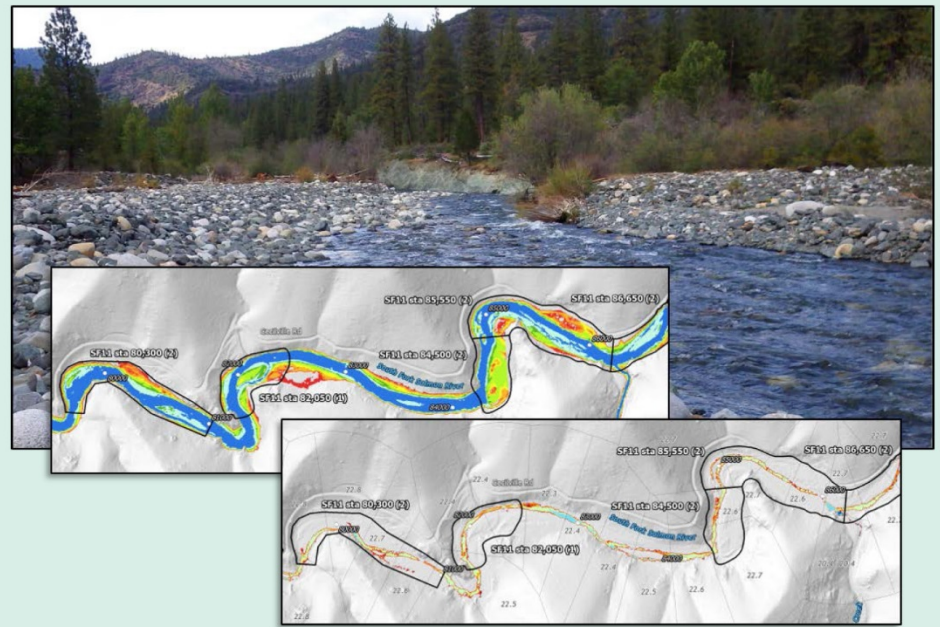
- Refugia enhancement and barrier removal
- Floodplain and Mine-tailing Assessment
- Off channel and side channel enhancement
- Large wood loading
- Floodplain restoration at reach and landscape scales
- Restoration of fire processes
- Reinstating historical barriers
- Push for sensible management and protection
- Petitions to list spring Chinook as Endangered Species
- Dam Removal

Floodplain
and Mine
Tailing
Assessment
&
Restoration

TECHNICAL MEMORANDUM • JANUARY 2018

Salmon River Floodplain Habitat Enhancement
and Mine Tailing Remediation Project

Phase 1: Technical Analysis of Opportunities and Constraints



PREPARED FOR
Salmon River Restoration Council
25631 Sawyers Bar Road
Sawyers Bar, CA 96027

PREPARED BY
Stillwater Sciences
850 G Street, Suite K
Arcata, CA 95521

DRAFT TECHNICAL MEMORANDUM • MARCH 2020

Salmon River Floodplain Habitat Enhancement
and Mine Tailing Remediation Project

Phase 2: Conceptual Design



PREPARED FOR
Salmon River Restoration Council
25631 Sawyers Bar Road
Sawyers Bar, CA 96027

PREPARED BY
Stillwater Sciences
850 G Street, Suite K
Arcata, CA 95521

Floodplain and Mine Tailing Assessment & Restoration



Salmon River Spring Run Chinook Census

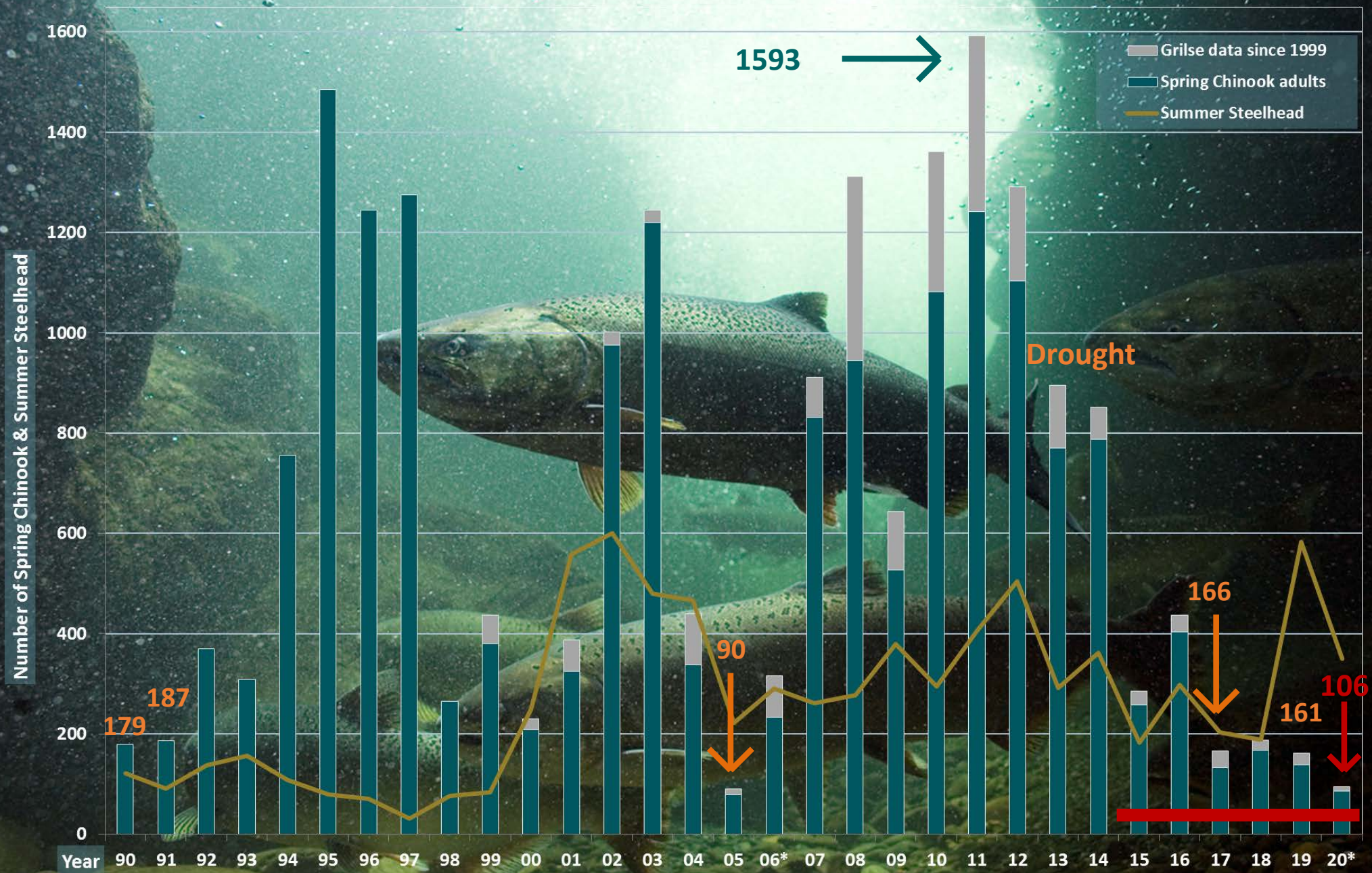
Average ~660

High of ~1600

Low of 90

Capped Peaks
Low Troughs

Longest running
trough since
1990



* 2006 Estimated due to wildfire

Photo: Salmon River Spring Chinook by Michael Bravo

Status of Recovery in a Spring Chinook Stronghold

Are we recovering?

Many important efforts are underway, but will we see the results in time?

The last 6 years of returns tell a hard story.

Will protections come in time?

Questions?

