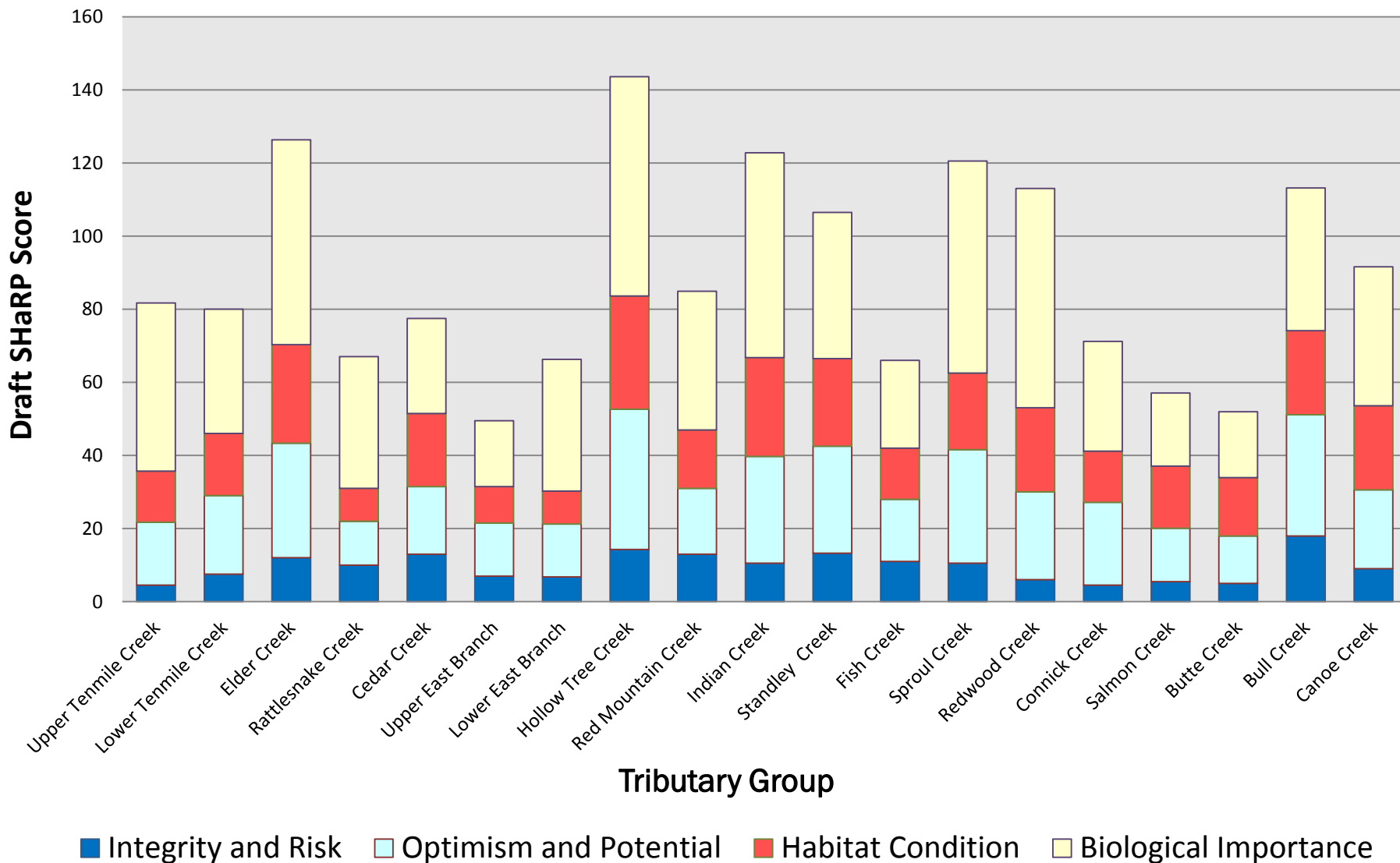
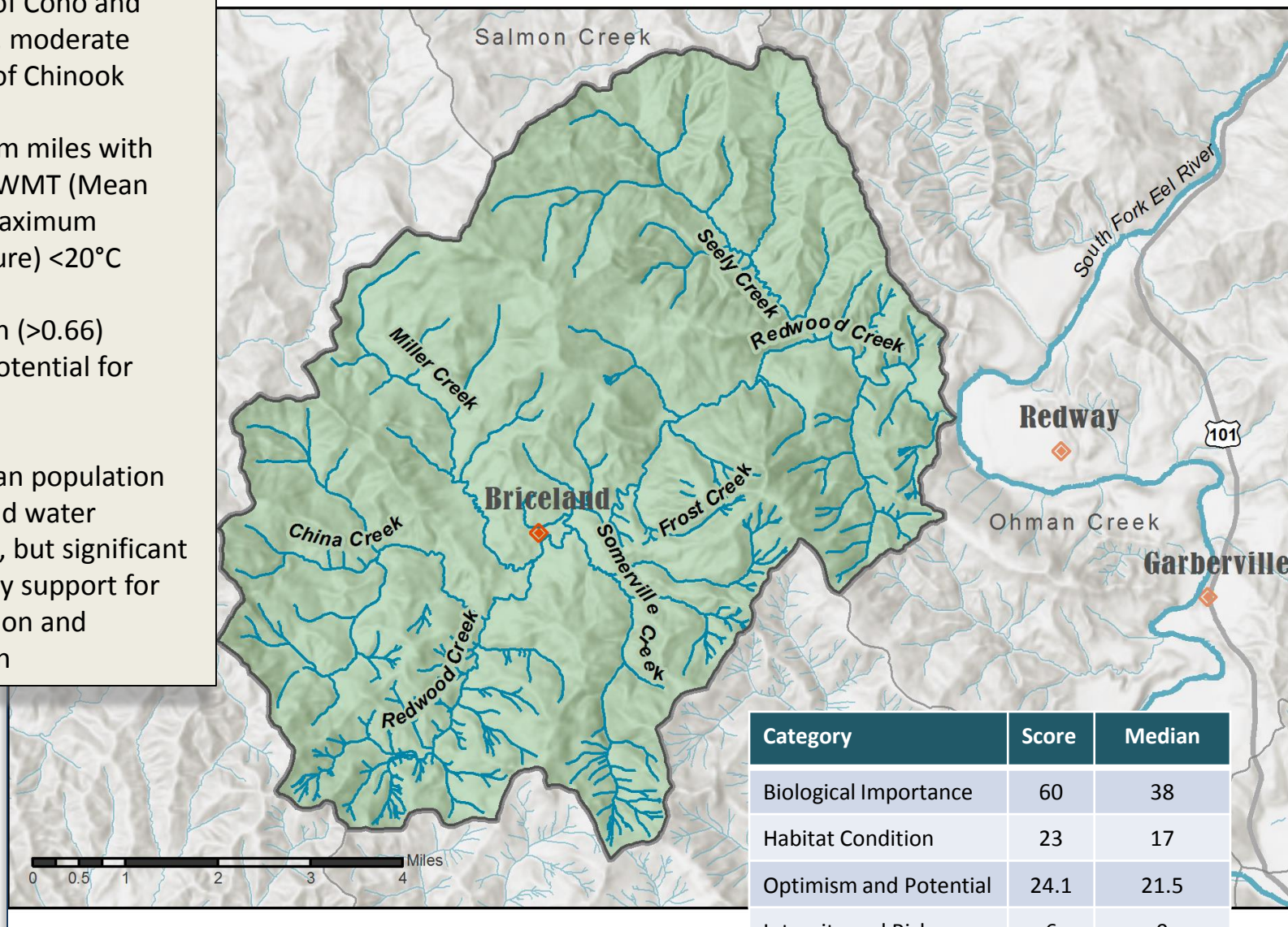


Draft Tributary Group Scores



Redwood Creek Tributary Group

- Very high relative redd densities of Coho and steelhead, moderate densities of Chinook
- 67% stream miles with stream MWMT (Mean Weekly Maximum Temperature) <20°C
- 15 km high (>0.66) Intrinsic Potential for Coho
- High human population density and water diversions, but significant community support for conservation and restoration



Category	Score	Median
Biological Importance	60	38
Habitat Condition	23	17
Optimism and Potential	24.1	21.5
Integrity and Risk	6	9