

Isotope tools to track floodplain rearing of native fishes



Rachel C. Johnson^{1,2}, **Ted Sommer**³, **Anna Sturrock**⁴, **Carol Kendall**⁵,
Louise Conrad³, **Jamie Sweeny**⁶ & **Jared Frantzich**³

1



2



3



4



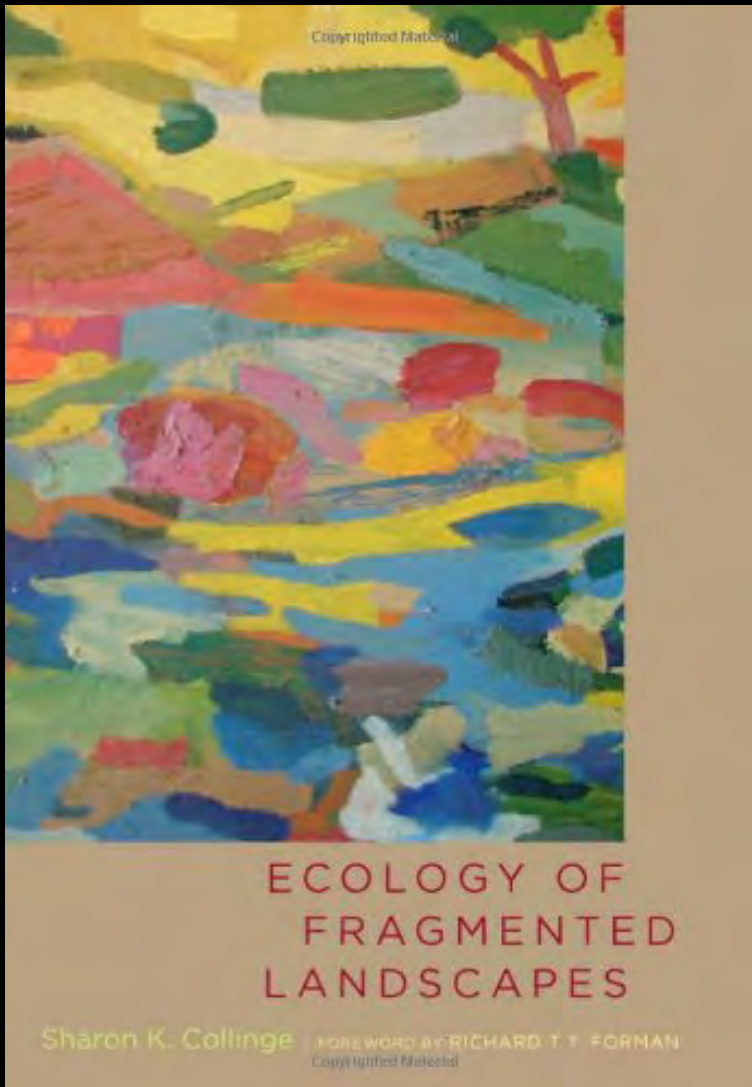
5



6



Fragmented landscapes

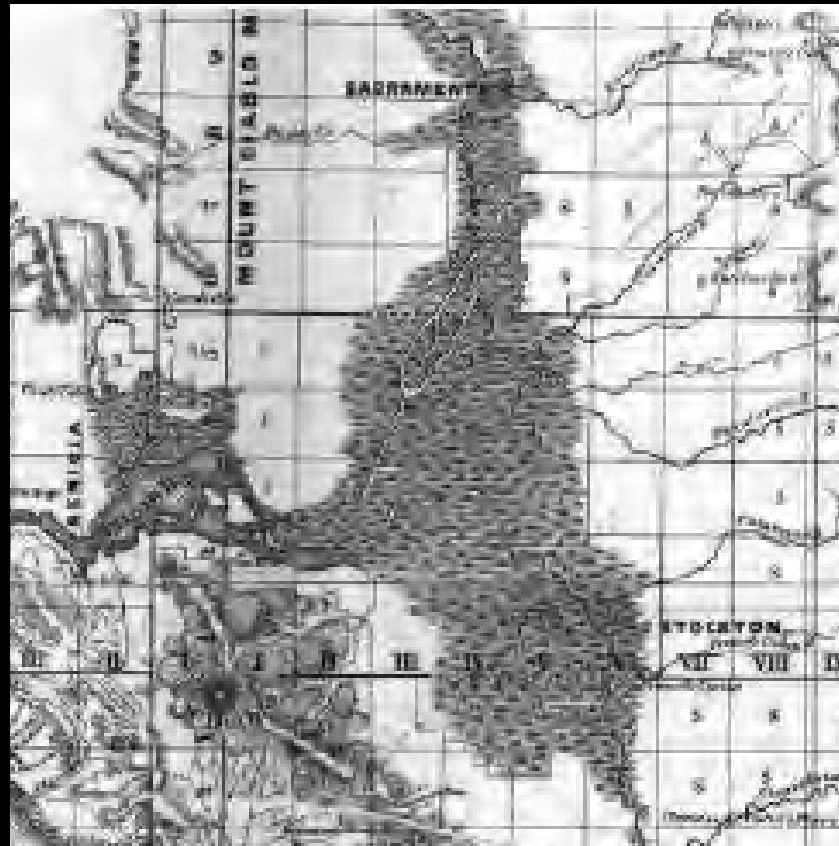


“The earth is increasingly an archipelago of habitat fragments in a sea of human development”

Altered landscapes

1856

present



Williams 2006



USGS

Yolo Bypass



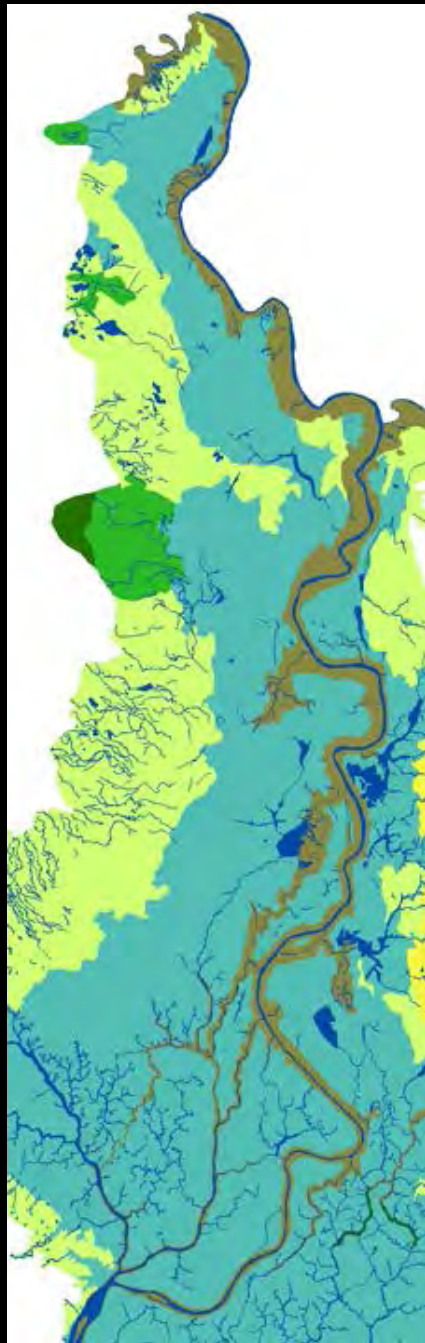
Sacramento River


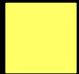

Sacramento River

Sacramento-San Joaquin Delta

San Francisco Bay

Historical Yolo Bypass Landscape



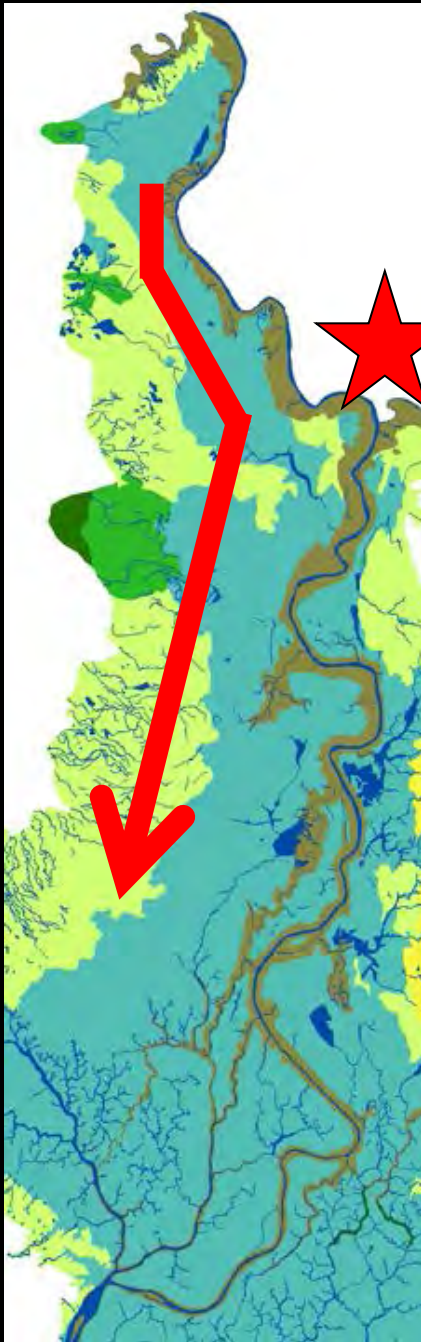
-  Freshwater emergent wetland
-  Wet meadow/seasonal wetland
-  Valley foothill riparian



K. STREET, FROM THE LEVEL.

**INUNDATION OF THE STATE CAPITOL,
City of Sacramento, 1862.**

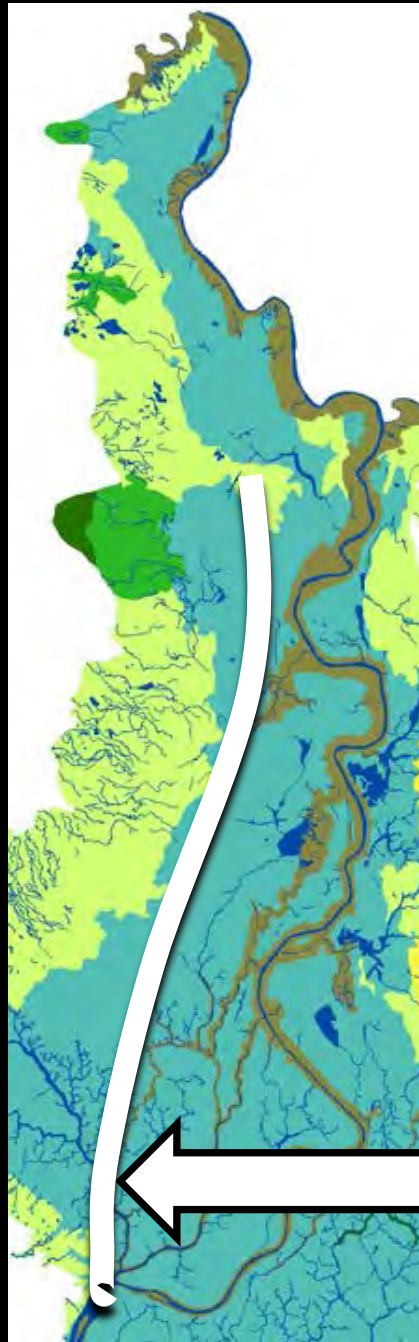
Published by J. H. CHURCHFIELD, San Francisco.



Sacramento

The Solution:
Guide Flood
Waters Away From
Valley
Communities

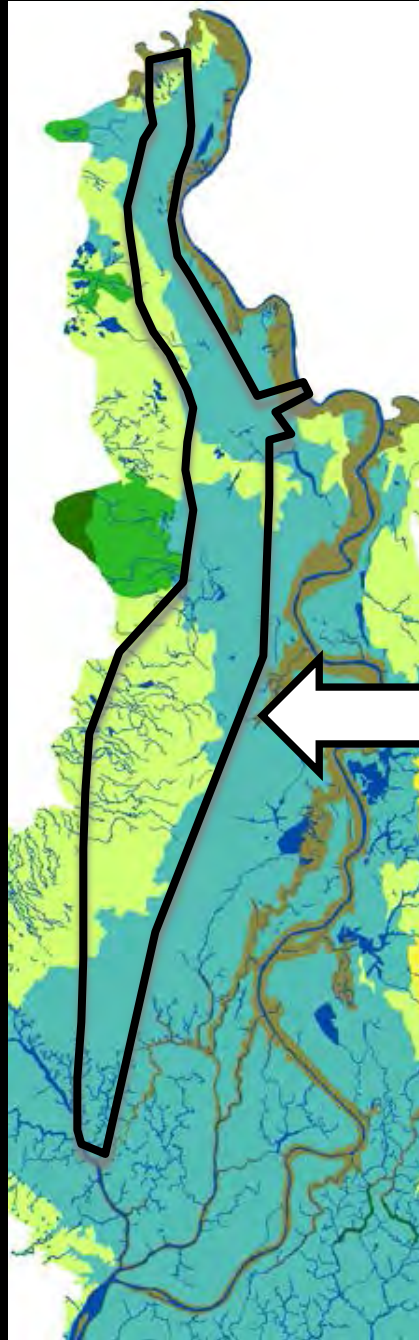
Yolo Bypass



Channelization

Slide courtesy of T. Sommer (DWR)

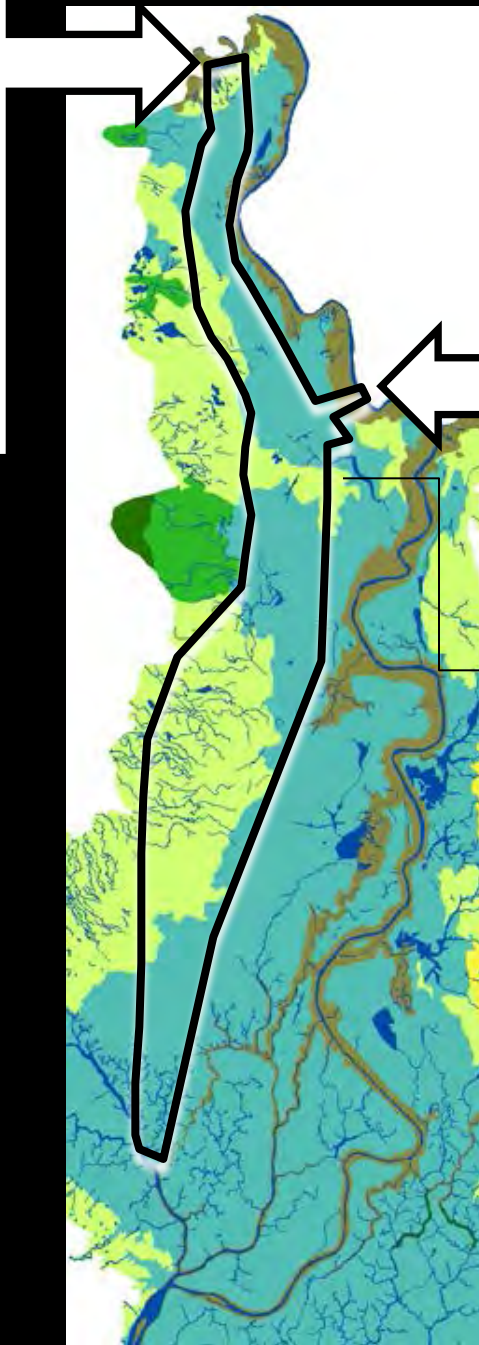
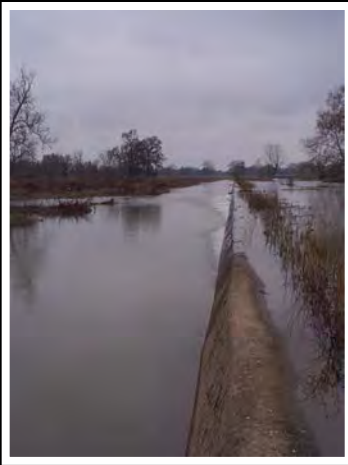
Yolo Bypass



Levees

Channelization

Slide courtesy of T. Sommer (DWR)



Weirs



Levees

Channelization



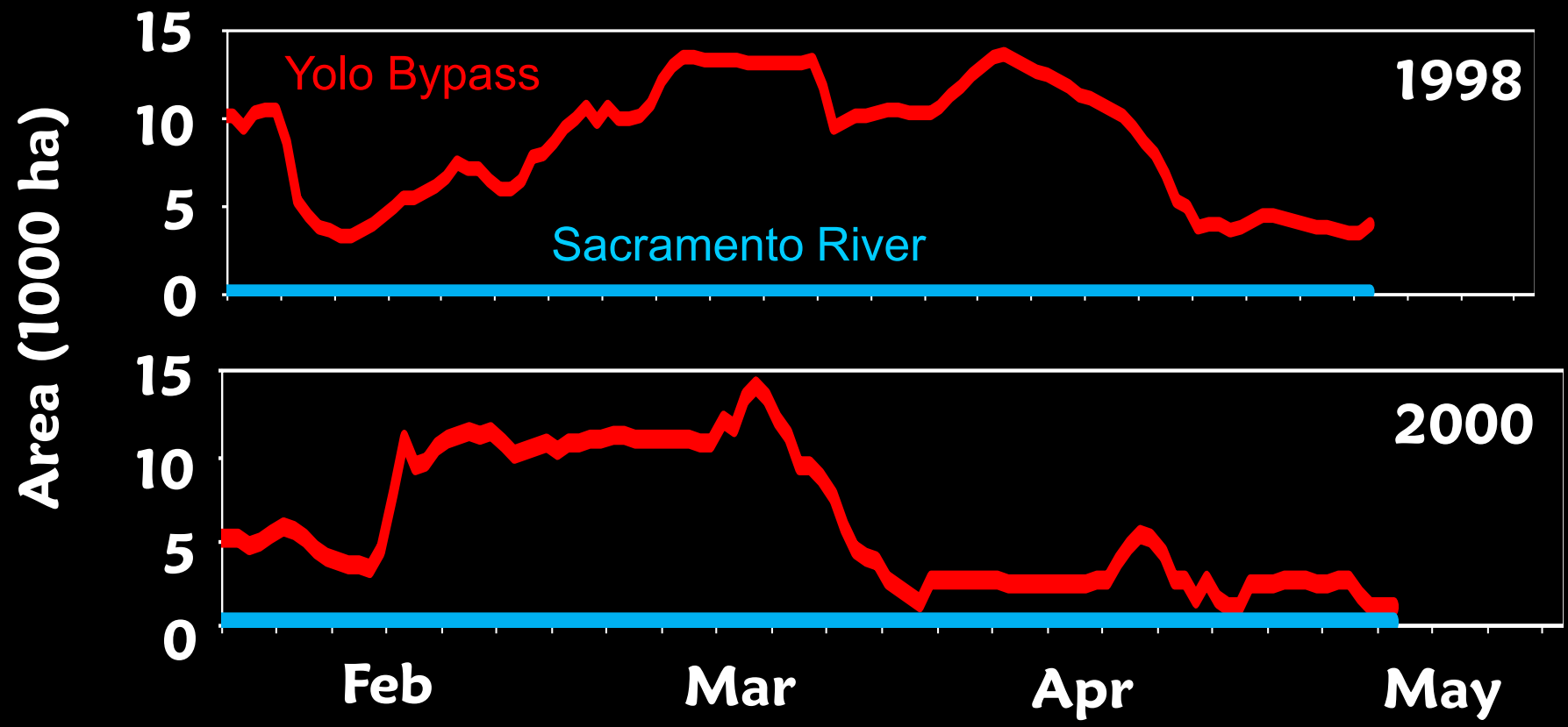
Current Landscape



Slide courtesy of T. Sommer (DWR)

Beyond the Thin Blue Line- Rearing Habitat

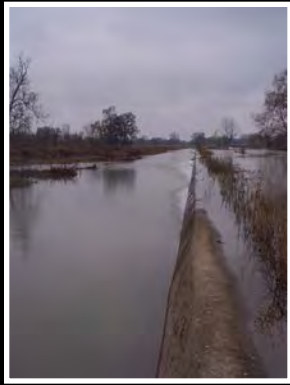
Surface Area (<2 meters depth)



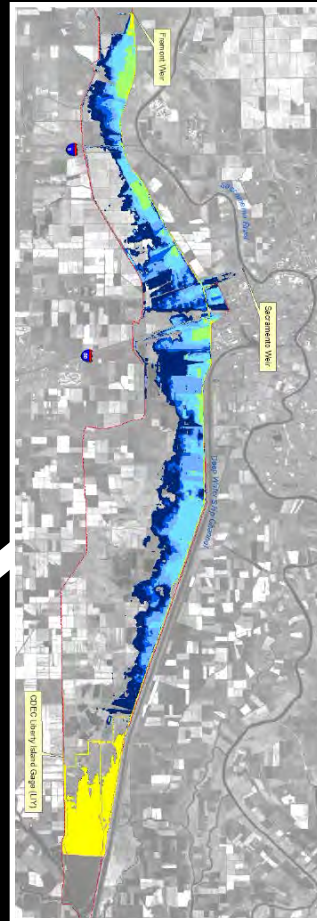
Sommer et al. 2004

Slide courtesy of T. Sommer (DWR)

Benefits of Yolo Bypass Inundation



Flood Conveyance



Fish Migration



Rearing Habitat



Food Web Exports to Estuary

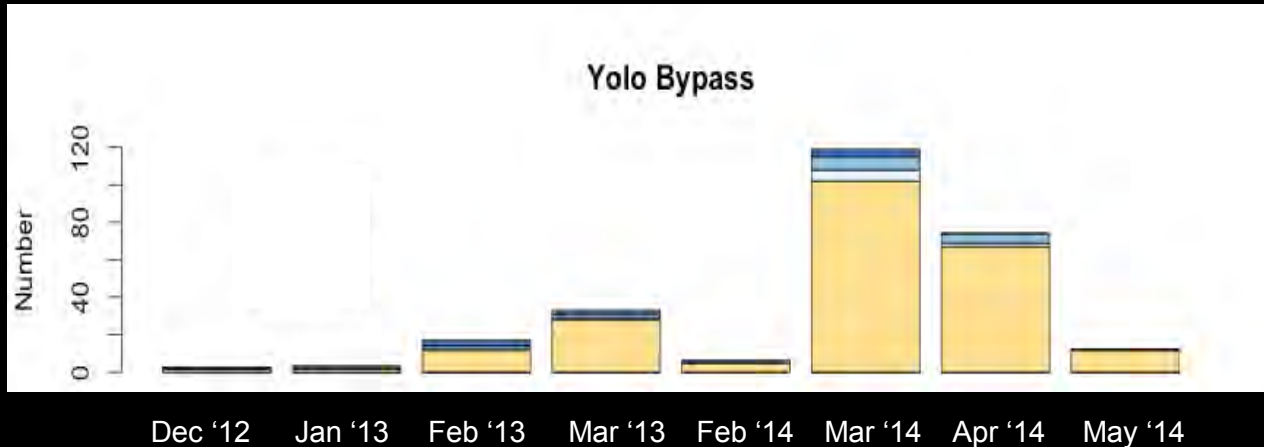


Slide courtesy of T. Sommer (DWR)

We know A LOT about the Yolo Bypass floodplain

Google scholar search: >1000

Four salmon runs use the floodplain



Genetic ID

Fall

Late Fall

Spring

Winter

Data courtesy of Mariah Meek, UCD

Lots of food on the floodplain

Drowning in bug soup on the Yolo Causeway



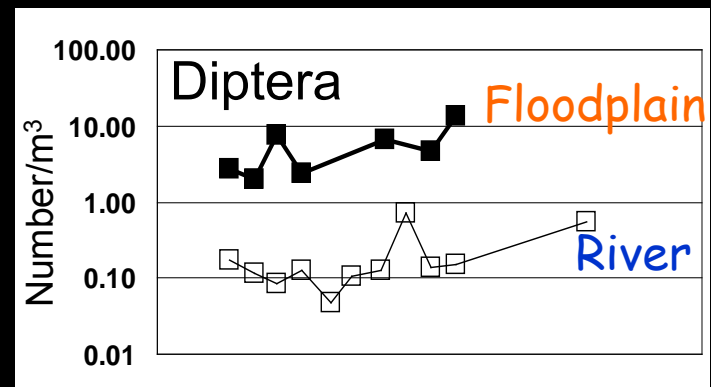
Fred David of Santa Rosa cleans the bugs off his windshield at the Union 76 station off Mace Boulevard in Davis. The place is buzzing at nightfall, when the swarms attack.

By Matthew Barrows
BEE STAFF WRITER
You'd expect the area around the Yolo Causeway to be a bit buggy, what with all the rice fields, duck ponds and standing water to make insects feel right at home. But travel the causeway between 8:30 and 9:30 p.m. and you quickly realize that "buggy" is an understatement. A better word is "biblical."



A weekly column about transportation issues in the region

view. Motorists desperately turn their wipers to the "full" position in a futile attempt to remove the gooey mess. And everyone wonders what in the name of hellfire and damnation is going on. Try as they might, they can't escape the swarm. The Back-seat Driver witnessed the phenomenon, or at least its grisly aftermath, one day last week at the Union 76 gas station off Mace Boulevard in Davis. (I took one of The Bee's cars, of course.) The 76 is the first station after the causeway for drivers heading west on Interstate 80, and once the sun goes down, it's buzzing with activity. About 8:15 p.m., employee Mike Cecil went out to change the soap and water in the squeegee. **► BUGS, page B2**



Feb Mar Apr May

Sommer et al. 2004; Benigno and Sommer 2008

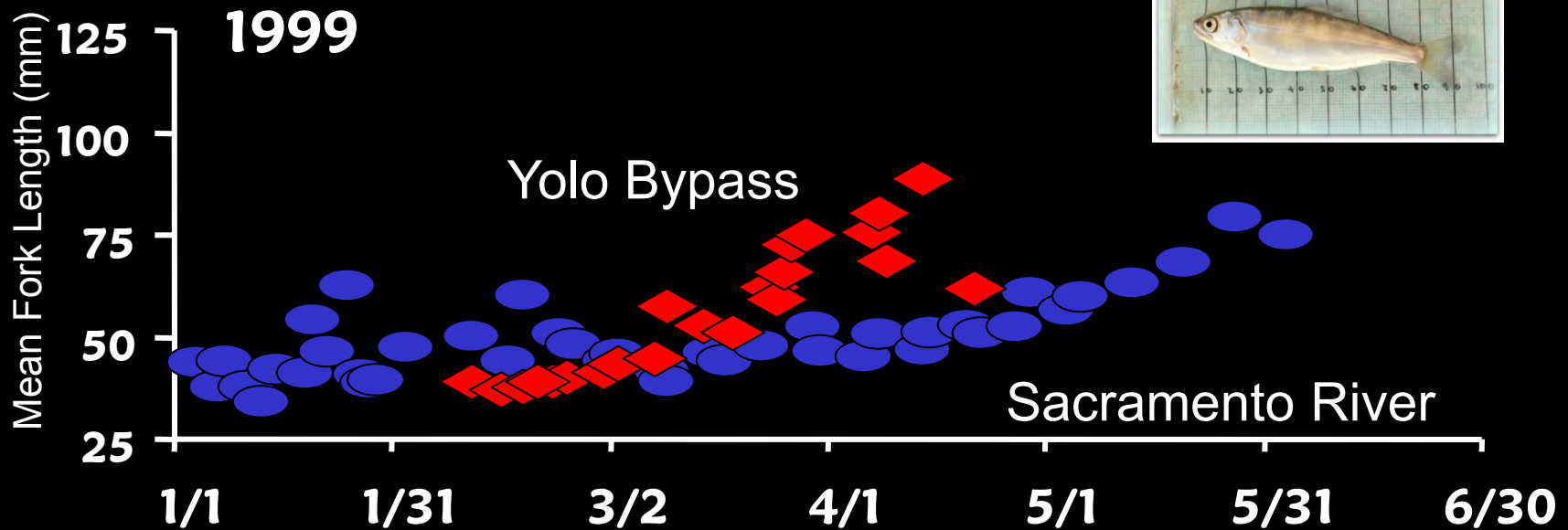
We know A LOT about the Yolo Bypass floodplain

Salmon have higher survival

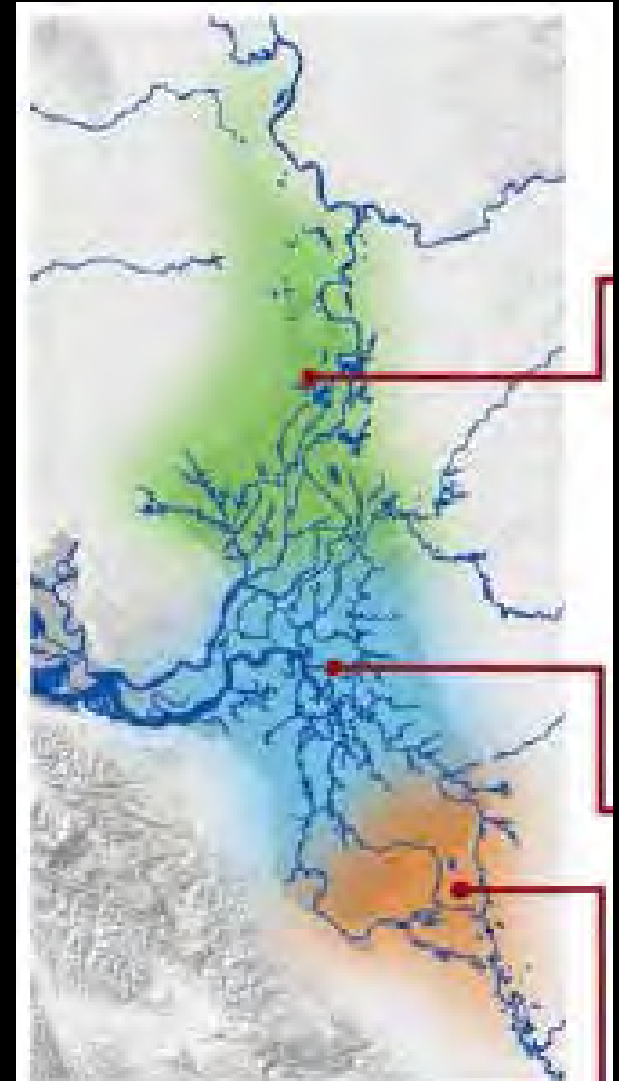
Floodplain rearing of juvenile chinook salmon: evidence of enhanced growth and survival

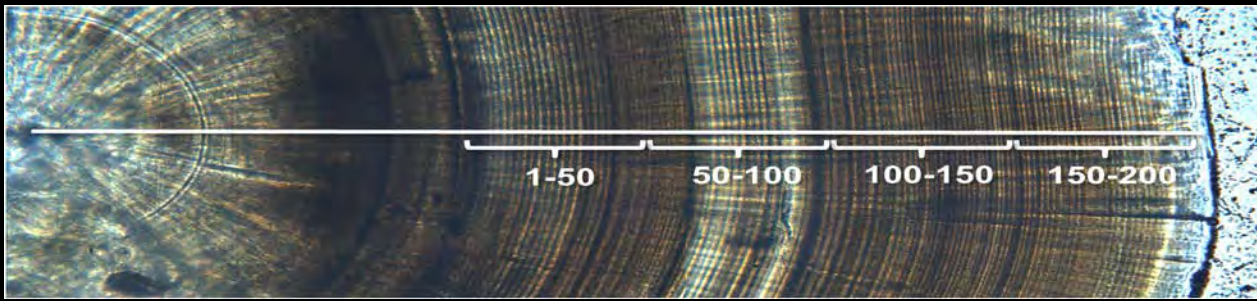
T.R. Sommer, M.L. Nobriga, W.C. Harrell, W. Batham, and W.J. Kimmerer

Salmon grow better

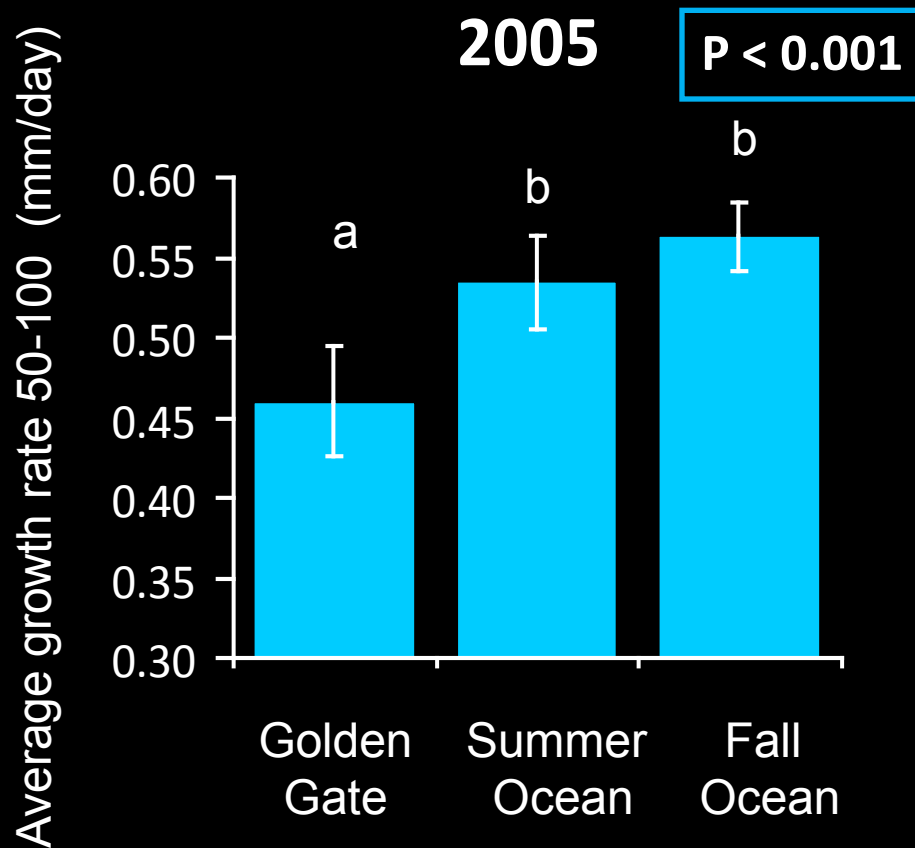


Freshwater and marine habitat linkages





Delayed freshwater growth benefits



Outstanding Questions

1. Are their delayed survival benefits to floodplain rearing?
2. How can we quantify the benefit of the floodplain over the lifetime of a fish? At a population level?

.....Floodplain marker

Benefit of floodplain marker



Photos courtesy of USFWS

Inundated rice fields



Carson Jeffres

Conceptual model for sulfur isotopes

Anoxic wetland &
rice fields

fertilizer seawater



Sulfur Isotopes in Chinook Salmon Diet



Hatchery

80-90% marine protein

$\delta^{34}\text{S} \sim +15 \text{ ‰}$

vs.



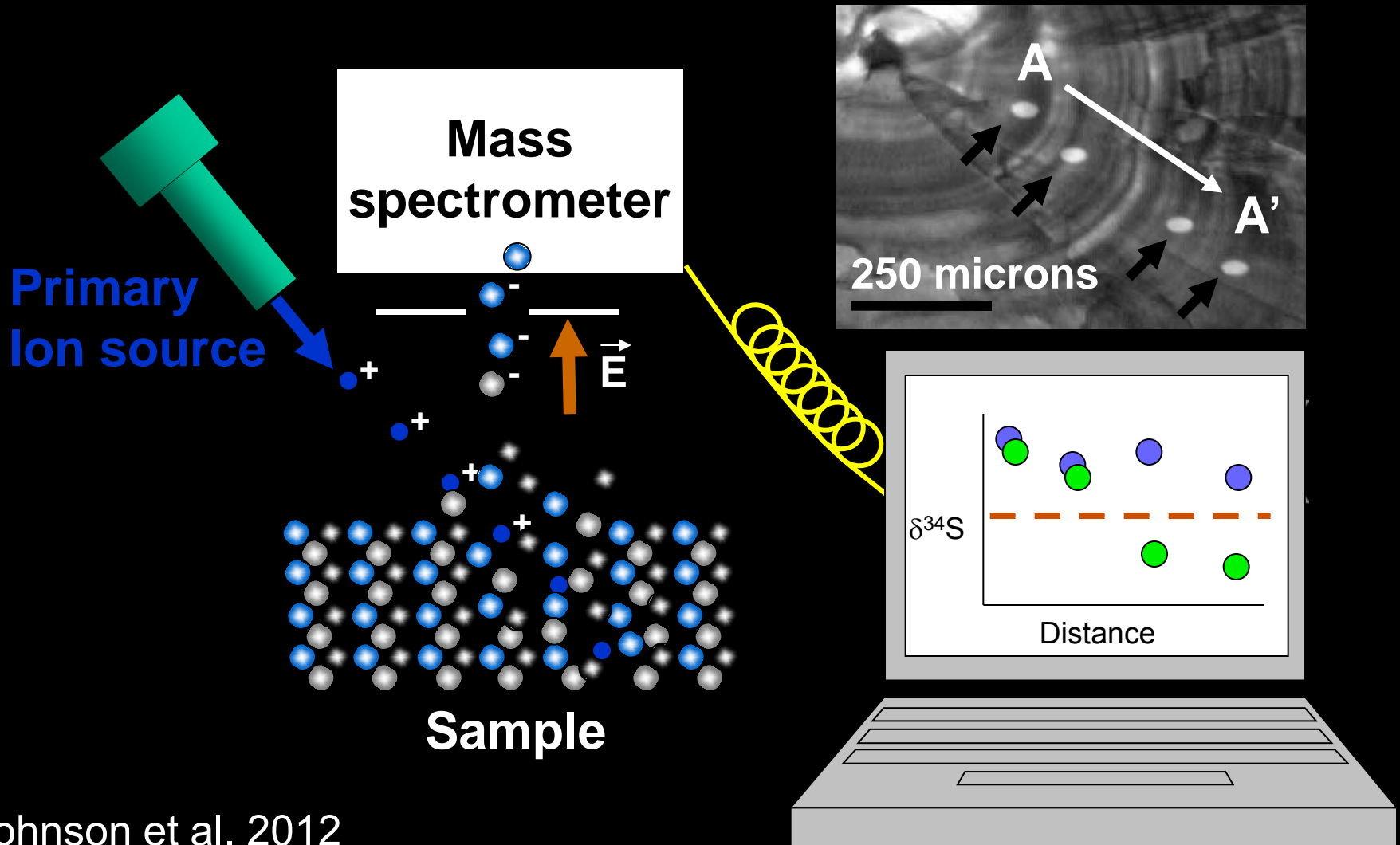
River

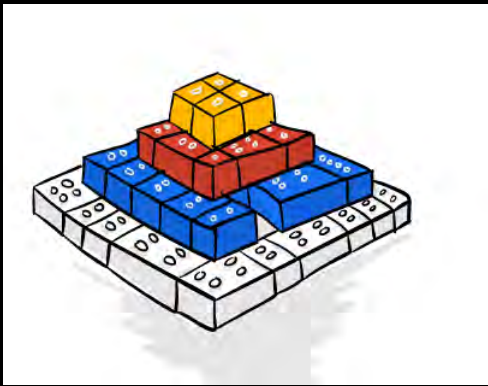
Freshwater prey

$\delta^{34}\text{S} \sim +2 \text{ ‰}$

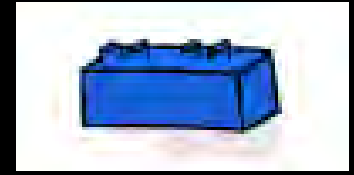
Sulfur Isotopes Otoliths

Secondary Ion Mass Spectrometry



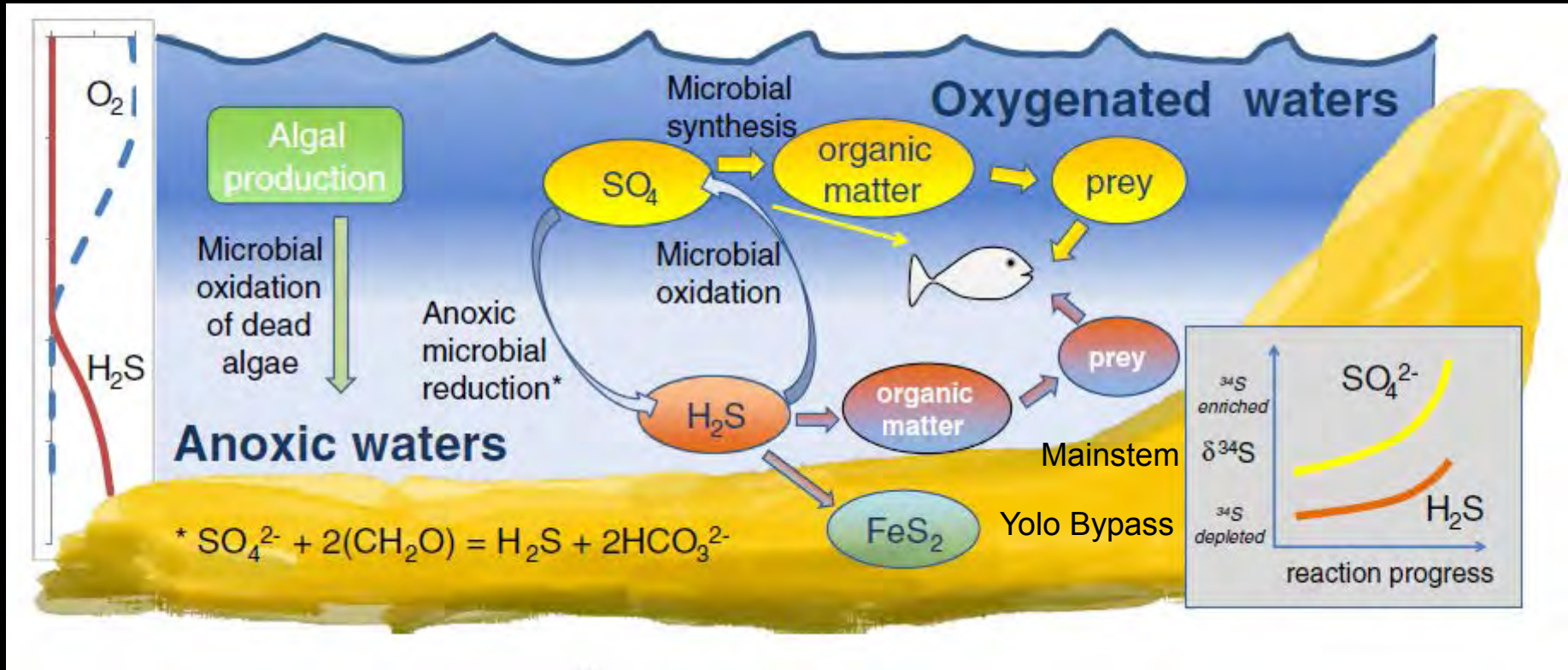


Questions



- 1) Do we see light and distinct $\delta^{34}\text{S}$ in the **organic matter** (POM) from the Yolo Bypass?
- 2) Do we see light and distinct $\delta^{34}\text{S}$ in the **stomach contents** of salmon on the Yolo Bypass?
- 3) Do we see light and distinct $\delta^{34}\text{S}$ in the **muscle/fin** of fish rearing on the Yolo Bypass?

Conceptual model for sulfur isotopes

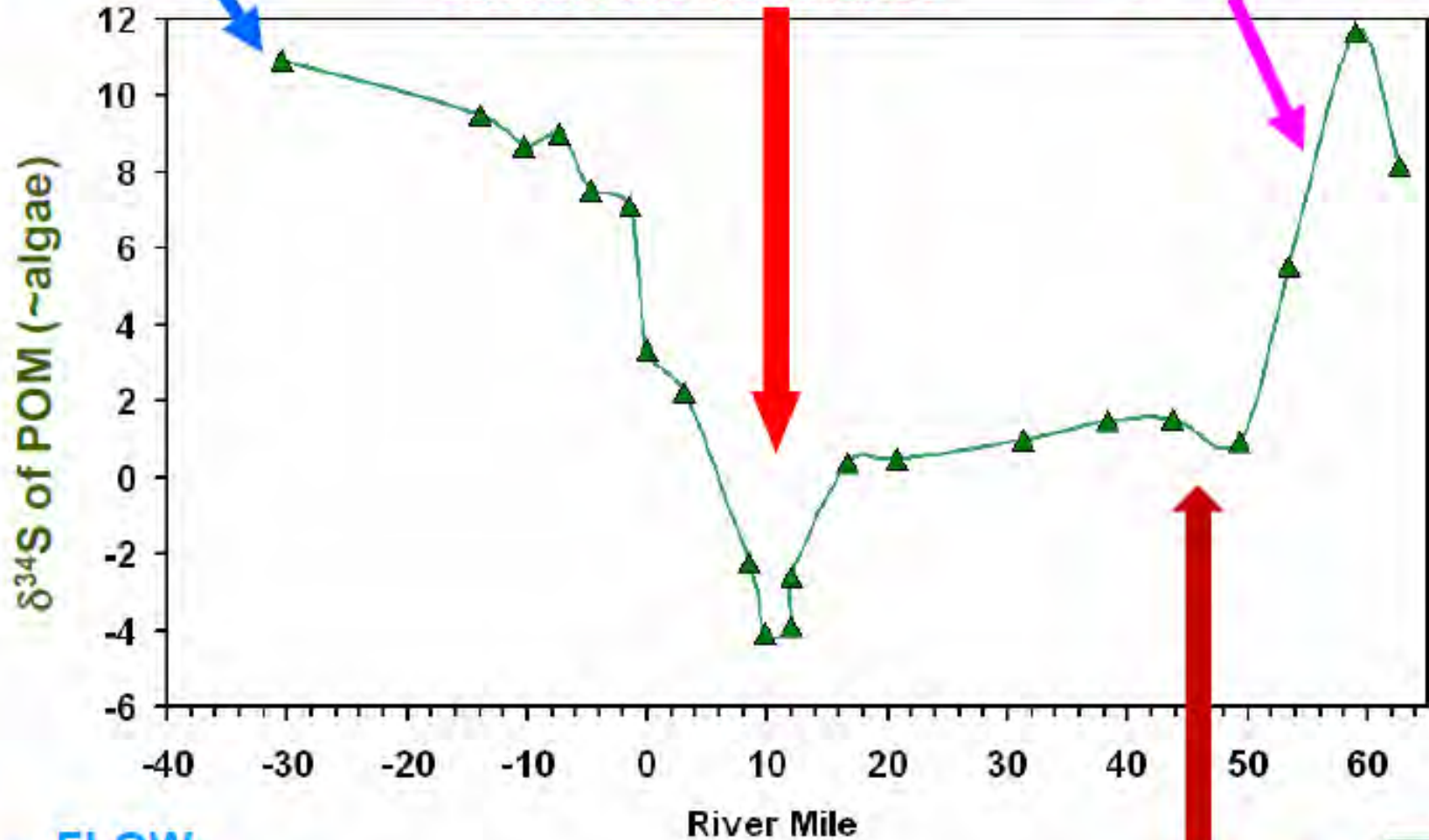


$\delta^{34}\text{S}$ is a useful tracer of algae source because the 4 main sources of SO_4 have distinctive $\delta^{34}\text{S}$ values.

Bay water

Cache/Yolo Tributaries

Upstream water



FLOW

Courtesy of Carol Kendall, BDSC 2010

WWTP



Juvenile Chinook salmon sampling

Delta Juvenile Fish Monitoring Program

2012-2014

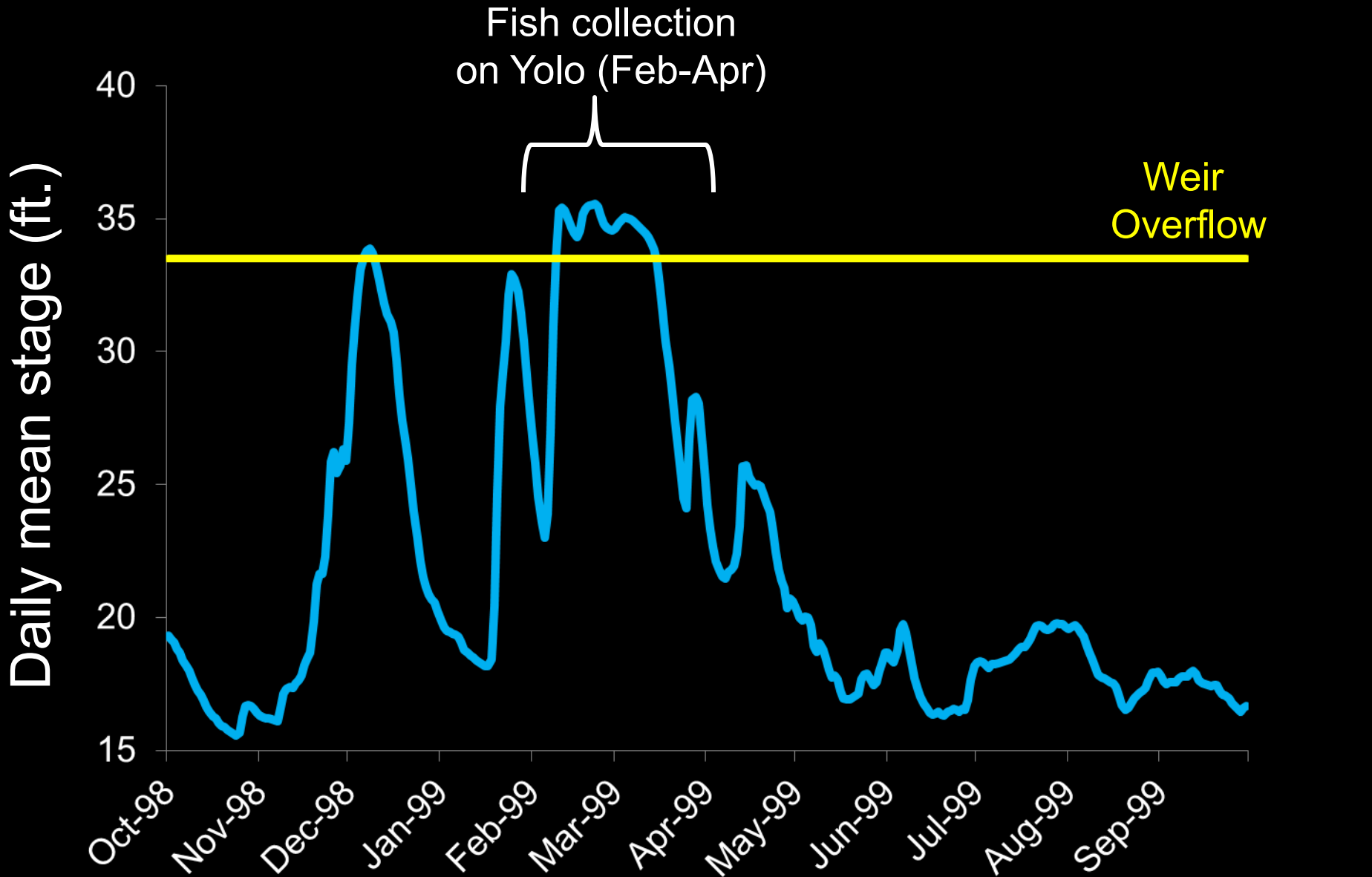
Yolo Bypass And Its Sources



1999



Daily Mean Stage at Fremont Weir



Tissue samples collected

Permanent
daily record

~50 days

~9 days

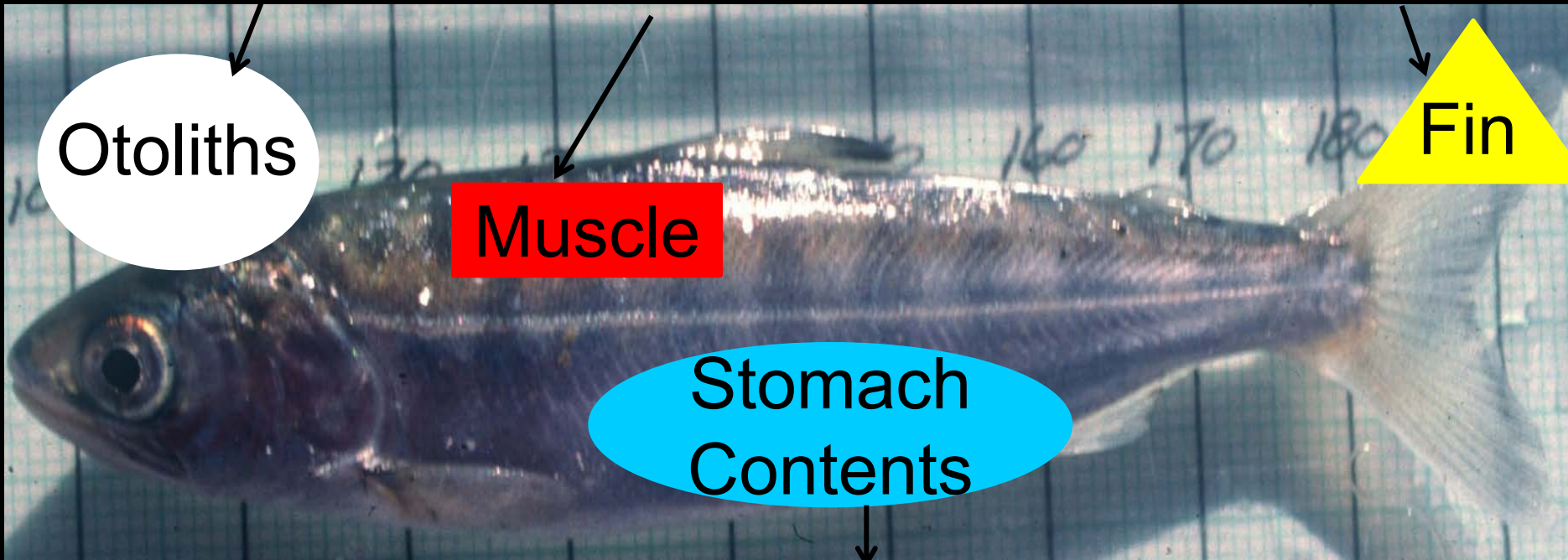
Otoliths

Muscle

Stomach
Contents

Fin

~1 day

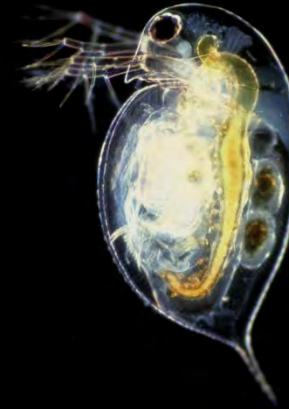


Stomach contents

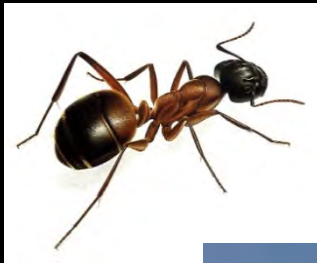
Diptera



Zooplankton



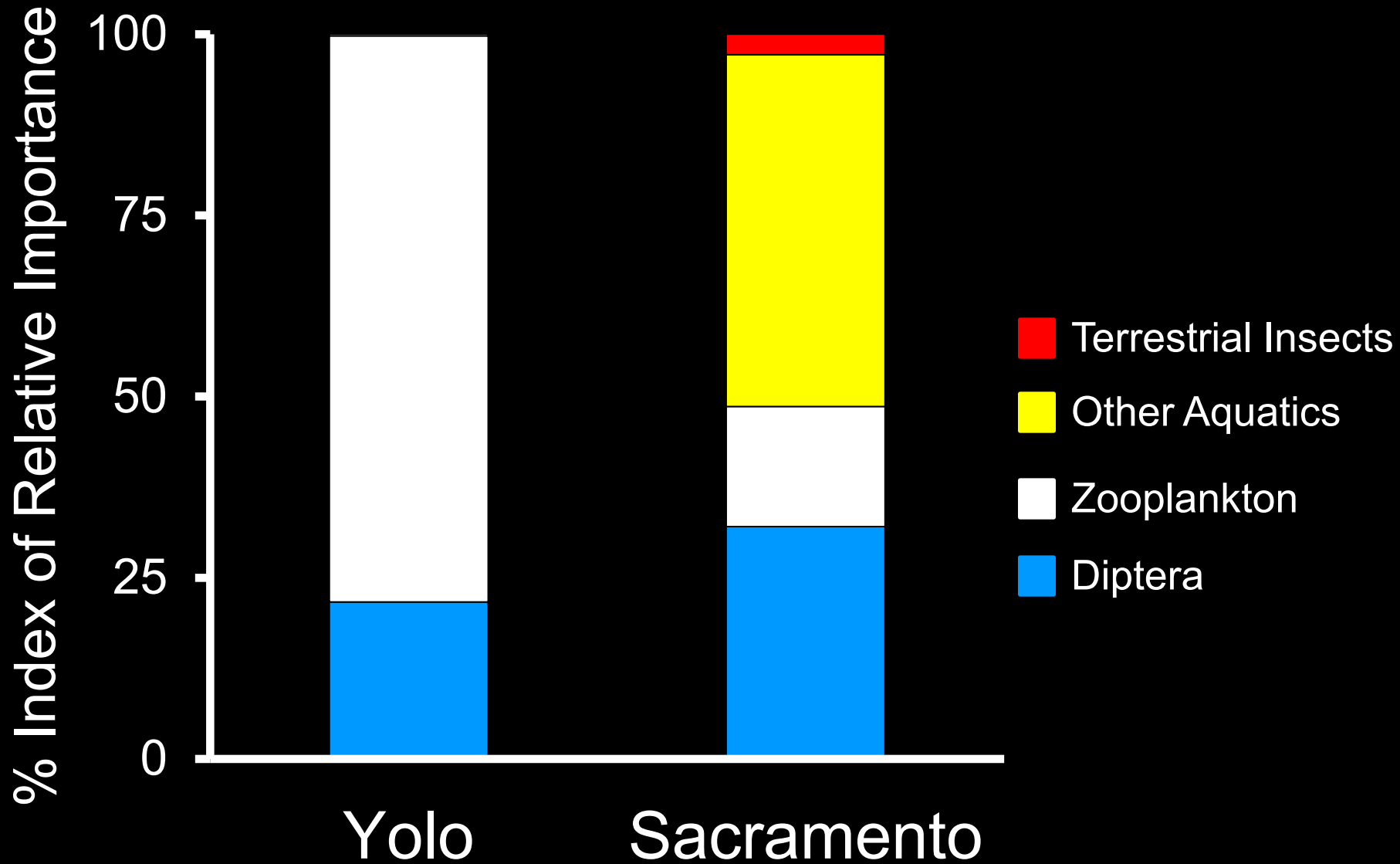
Terrestrial prey



Other aquatic prey

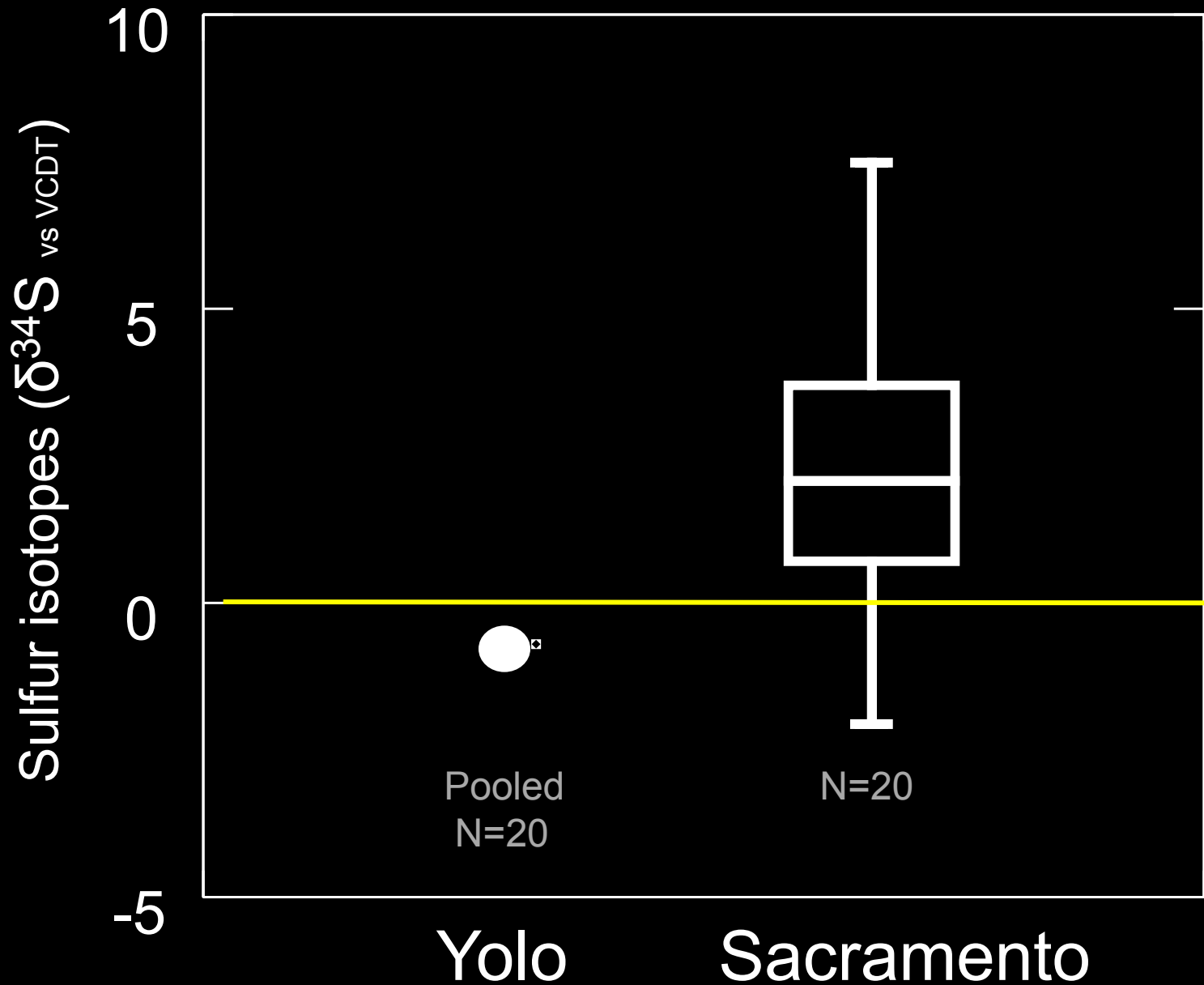


Stomach contents

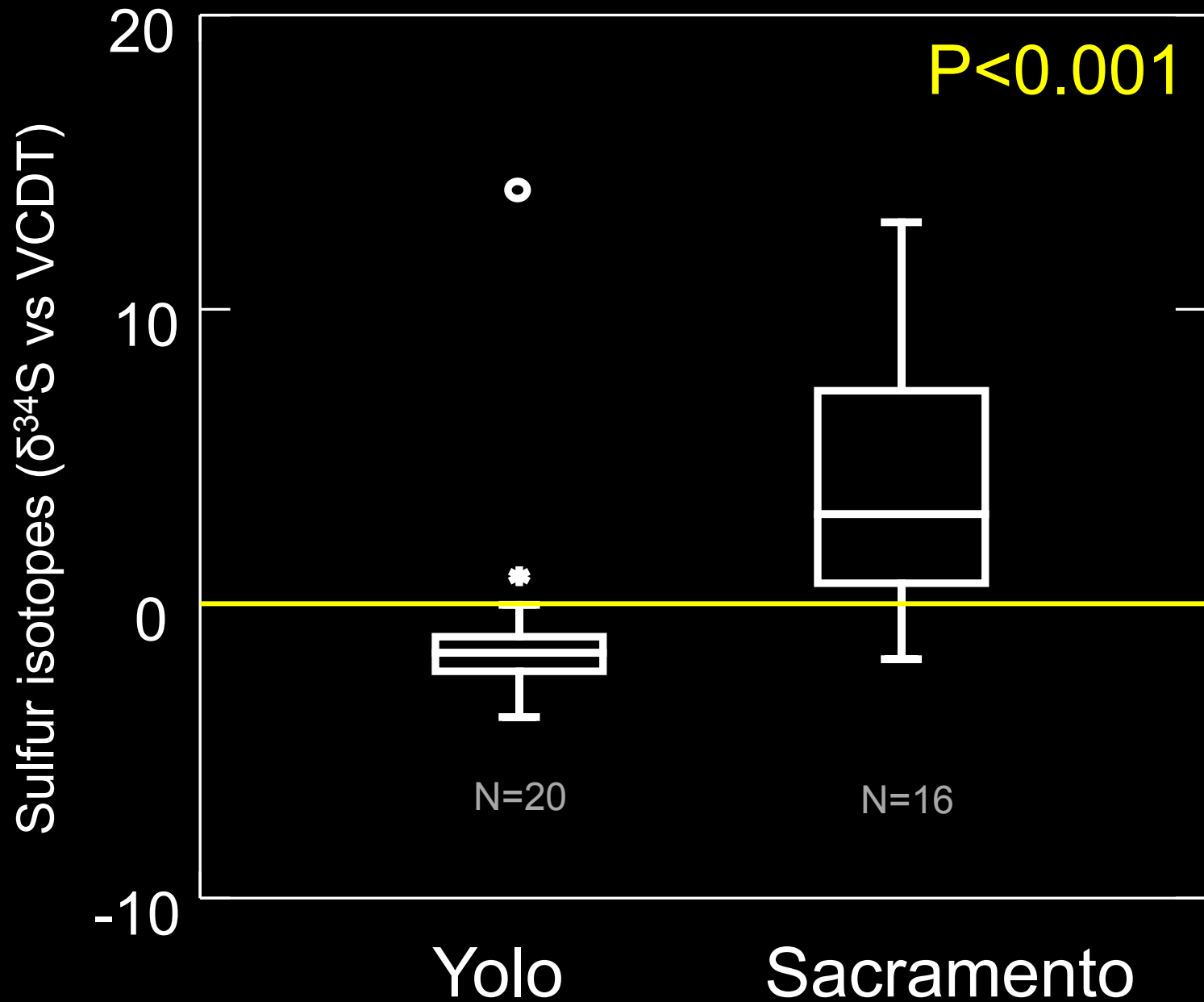


$$\text{IRI} = (\% \text{ Abundance} + \% \text{ Weight}) \times \text{Frequency}$$

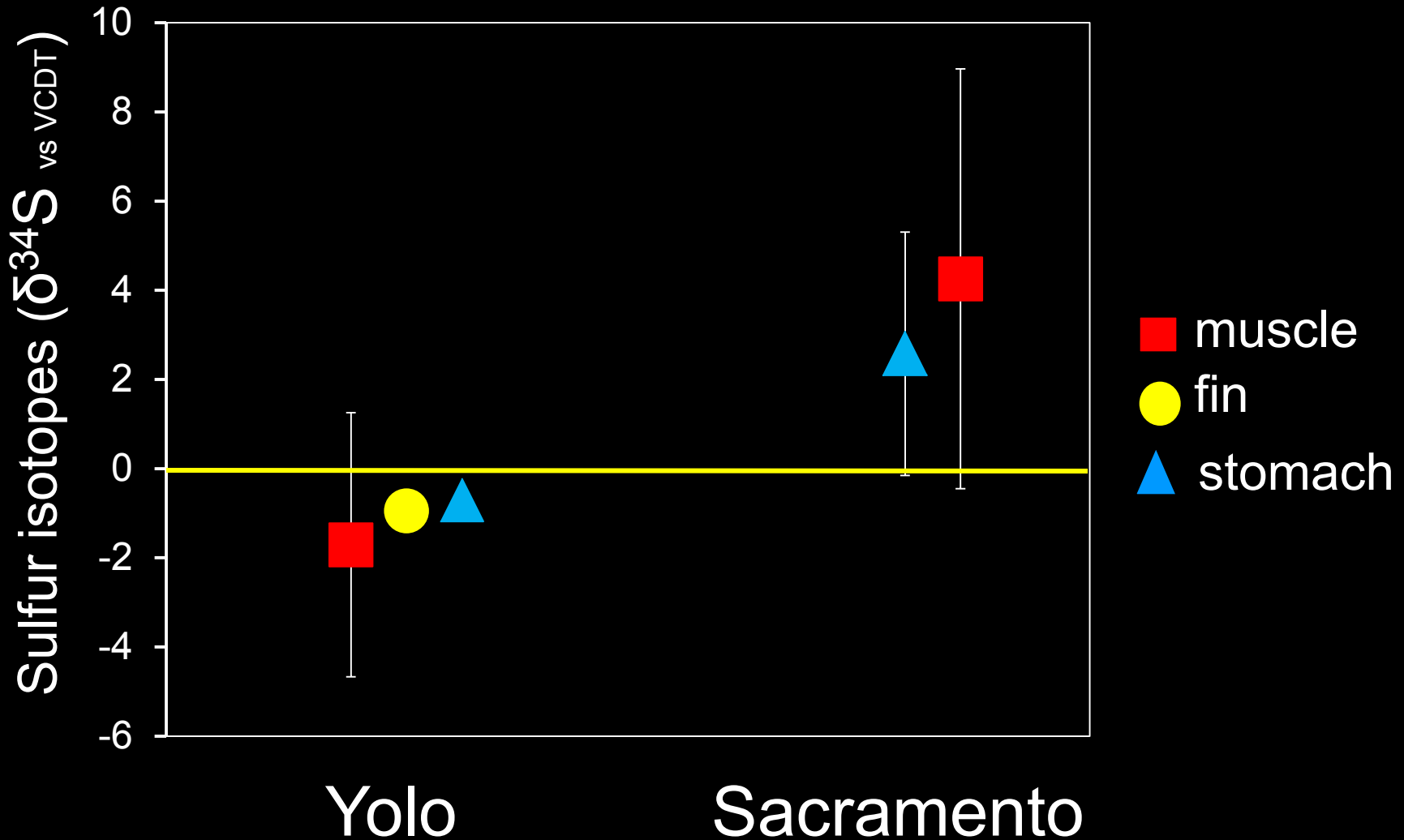
Stomach contents sulfur isotopes



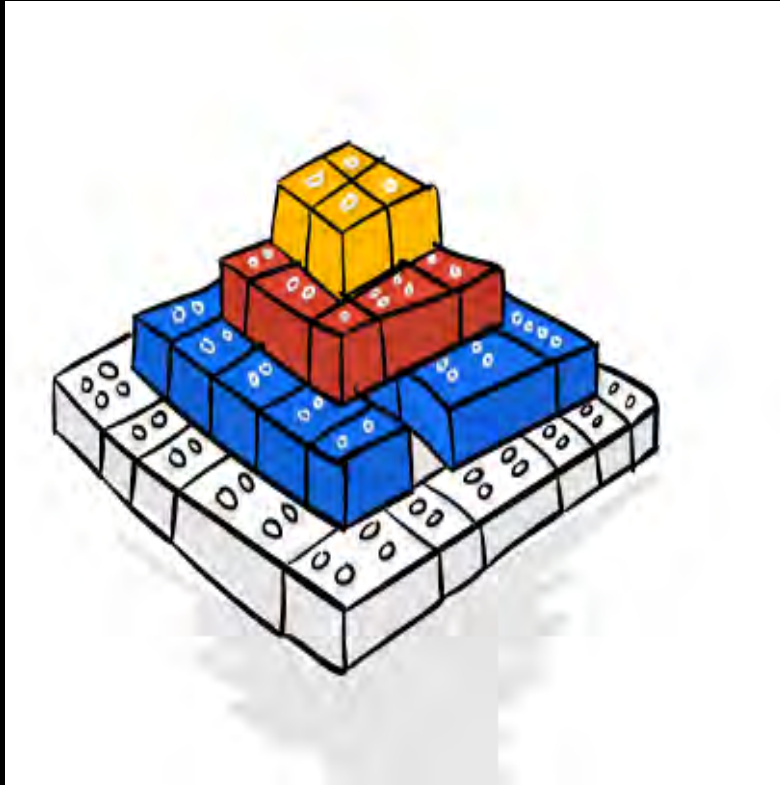
Muscle sulfur isotopes



Tissue sulfur isotopes



Summary & Next Steps



Yolo Bypass has lighter $\delta^{34}\text{S}$ than Mainstem Sacramento River in fish tissues!

Expand study- Yolo POM, Knaggs Ranch, San Joaquin River, Sacramento splittail, and hope for RAIN!

$\delta^{34}\text{S}$ otolith

Thank you!



Special thanks to: USFWS Delta Juvenile Fish Monitoring Program field crew! Jack Ingram, Denise Barnard, George Whitman (UCD)